

J.M. products and their uses.

H.W. Johns-Manville Co. (N.Y.)

[New York, c1915]

<https://hdl.handle.net/2027/uiug.30112069211958>

HathiTrust



www.hathitrust.org

Public Domain, Google-digitized

http://www.hathitrust.org/access_use#pd-google

We have determined this work to be in the public domain, meaning that it is not subject to copyright. Users are free to copy, use, and redistribute the work in part or in whole. It is possible that current copyright holders, heirs or the estate of the authors of individual portions of the work, such as illustrations or photographs, assert copyrights over these portions. Depending on the nature of subsequent use that is made, additional rights may need to be obtained independently of anything we can address. The digital images and OCR of this work were produced by Google, Inc. (indicated by a watermark on each page in the PageTurner). Google requests that the images and OCR not be re-hosted, redistributed or used commercially. The images are provided for educational, scholarly, non-commercial purposes.

620.195
J62j

Q.

Lib

J·M PRODUCTS AND·THEIR·USES



OAK ST HDSF

THE UNIVERSITY
OF ILLINOIS
LIBRARY

620.195

562j

Return this book on or before the
Latest Date stamped below. A
charge is made on all overdue
books.

U. of I. Library

APR -2 1940

DEC -6 1948

MAR 07 2006

17625-S

Generated at University of Michigan on 2023-02-01 07:27 GMT / https://hdl.handle.net/2027/uiug.30112069211958
Public Domain, Google-digitized / http://www.hathitrust.org/access_use#pd-google

Generated at University of Michigan on 2023-02-01 07:27 GMT / <https://hdl.handle.net/2027/uiug.30112069211958>
Public Domain, Google-digitized / http://www.hathitrust.org/access_use#pd-google

OAK ST. HDSF

J-M PRODUCTS AND THEIR USES

H. W. Johns-Manville Co.

Akron
Albany
Atlanta
Baltimore
Birmingham
Boston
Buffalo
Chicago
Cincinnati
Cleveland
Columbus

Dallas
Dayton
Denver
Detroit
Duluth
Galveston
Houghton
Houston
Indianapolis
Kansas City



Los Angeles
Louisville

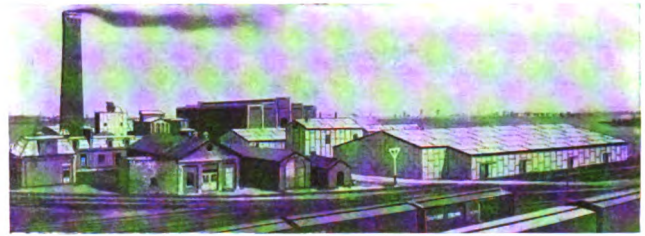
Memphis
Milwaukee
Minneapolis
Newark
New Orleans
New York
Omaha
Philadelphia
Pittsburgh
Portland

Rochester
St. Louis
St. Paul
Salt Lake City
San Francisco
Seattle
Syracuse
Toledo
Washington
Wilkes-Barre
Youngstown

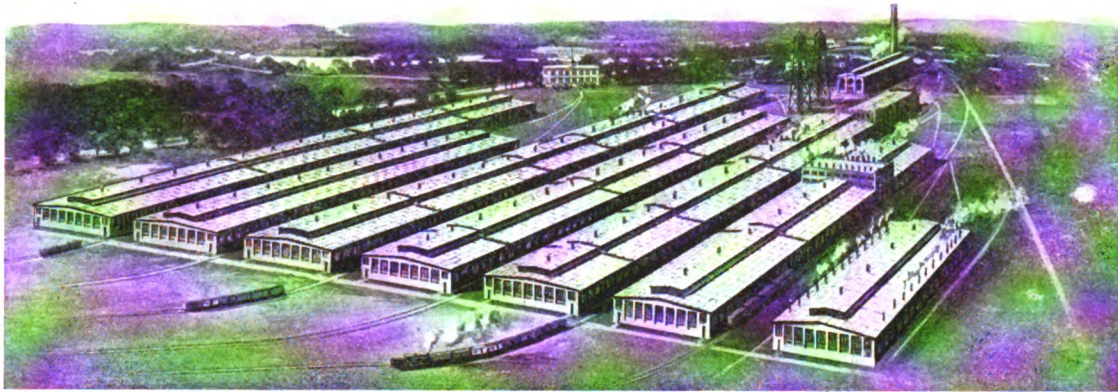
COPYRIGHT, 1915
BY
H. W. JOHNS-MANVILLE CO.
NEW YORK



Lockport, N. Y.



Claremont, N. J.



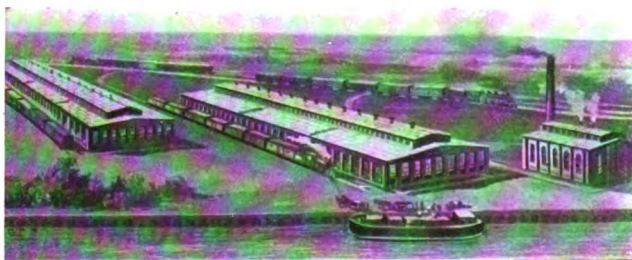
Manville, N. J.



West Milwaukee, Wis.



Asbestos Mines, Danville, P. Q.



Chicago, Ill.



Milwaukee, Wis.



Nashua, N. H.



Nashua, N. H.

WHERE J-M PRODUCTS ARE MADE

Generated at University of Michigan on 2023-02-01 07:27 GMT / https://hdl.handle.net/2027/uiug.30112069211958
Public Domain, Google-digitized / http://www.hathitrust.org/access_use#pd-gooole



San Francisco, Cal.



St. Louis, Mo.



Buffalo, N. Y.



Baltimore, Md.



Minneapolis, Minn.



Milwaukee, Wis.



Milwaukee, Wis.



Cincinnati, O.



Pittsburgh, Pa.



Executive Offices, New York



Seattle, Wash.



Winnipeg, Man.



Los Angeles, Cal.



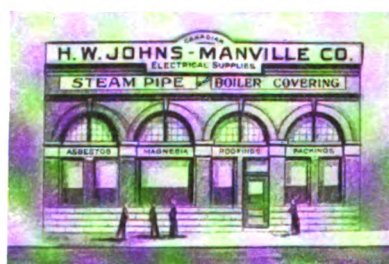
Chicago, Ill.



Omaha, Neb.



Cleveland, O.



Toronto, Ont.



Boston, Mass.



Kansas City, Mo.



Philadelphia, Pa.



Detroit, Mich.



Atlanta, Ga.



Montreal, P. Q.



New Orleans, La.

PRINCIPAL OFFICES, H. W. JOHNS-MANVILLE CO.

Generated at University of Michigan on 2023-02-01 07:27 GMT / https://hdl.handle.net/2027/uiug.30112069211958 Public Domain, Google-digitized / http://www.hathitrust.org/access_use#pd-google

620.195
J62 J



A. A. T. 19-Je-16.

Introductory Note

To present in briefest form a general idea of the number, variety and range of uses of J-M Products is the purpose of this Condensed Catalog

Practically every J-M Product herein listed is treated exhaustively in a special catalog, a booklet or a technical bulletin

Our branch nearest you will be glad to send this special literature on any J-M Product that interests you

19511 Dm...

328630

J-M Responsibility and Its Application in J-M Service

Responsibility for the quality and service of manufactured goods is necessarily qualified by the ability of the manufacturer to maintain a standard of quality and to assure the service intended.

J-M Responsibility assumes fullest accountability for the quality and service of every J-M Product. To see that every J-M Product discharges that accountability to the permanent satisfaction of the purchaser is the business of J-M Service.

This service, with its branches and supply stations in every large city, assures a nation-wide ability to respond to every just demand and to see that J-M Products render service in the fullest sense of the word.

The experience, ability and commercial good faith of more than fifty years is embodied in every J-M Product. But we are human and mistakes may occur. When they do occur, we mean to correct them; and this process of correction is easily available to you, for J-M Service "covers the continent."

A communication from you, at any time, on any subject, to our nearest branch will put J-M Service in close and immediate touch with you.

We are rather proud of the fact that the H. W. Johns-Manville Company, like most other institutions of substantial growth, is an evolution. The company has grown to its present proportions and commanding rank from small beginnings. Every step has been a positive step and has in each case been made on the solid ground of growth from within.

The founders of the company began business in 1858. Their special interest was in the development of asbestos specialties; and from that day to this, H. W. Johns-Manville Company has led the way in the application of this unique mineral to the manifold uses of modern life. It is doubtful if in any field of art, science or industry J-M Asbestos Products have not become the standards in their respective fields.

From the first small factory, at Milwaukee, for the manufacture of Pipe Covering, to the several large plants and many branches

and supply stations that to-day "cover the continent" is a far cry. Employees then were few, whereas they now number many thousands.

Quality of Product, however, and the service of that product, not size of the organization or the multiplication of plants, has always been the ideal before this company. It has grown naturally as the result of the need it has supplied. As truly to-day as in the days of the first "J-M" enterprise, it is the determination of the directors of H. W. Johns-Manville Company that this ideal of quality of products and of service in the application of those products shall be the impelling principle of its future.

Through an army of specialists who are identified with the organization at its many branch offices, J-M Service places at your disposal its entire fund of knowledge.

The service of these men is yours on request. Their business is to co-operate with you on any proposition that is covered by the products in this catalog.

Their primary duty is to render J-M Service; and to us, the only satisfactory basis on which they may effect a sale, is as a result of their efforts in your behalf.

To the Architect, J-M Service offers the specialized co-operation of highly trained men who for years have handled propositions involving the use of J-M Building Materials. These materials cover almost the entire range of requirements in modern building construction. As they are installed under widely diverse conditions and to fulfil widely varying requirements, the experience gained in handling them amounts practically to a standard of practise covering the architect's problems from foundation to roof.

It is on the basis of this experience that we offer J-M Service and seek the confidence of architects. J-M representatives are consulting specialists rather than "salesmen." It will be found that their recommendations are offered on the principle that the specification of a J-M Product is not desired until study of the conditions indicates the superiority of that product for the service demanded.

To the Steam Engineer, J-M Service offers products that are sold in the interest of plant economy and, therefore, in his own interest also.

These products are more than maintenance materials. They are economical plant helps and as such they are designed and sold. And

while this is one phase of J-M Service, there is another factor that is even more important—the personal help on individual plant problems.

We realize that more than good products and prompt delivery are necessary and that the only true service for the plant superintendent and engineer is to talk over conditions on the ground of an honest dealing basis. And this we are ready to do.

To the Electrical Industry, the diversity of J-M Electrical Products shown in this catalog will indicate the far-reaching channels that are affected by J-M Service. And while the same specialized effort is used in making electrical purchases profitable, the products themselves express a service in their modern design, their standard character and their completeness.

The modern Central Station or Railway utility can rely on J-M Service for complete line of bulk materials and distribution accessories.

The Jobber, Dealer and Contractor are also served by the very reputation and adaptability of J-M Materials to commercial resale and building installation work.

In lighting work this service offers the most complete illuminating department that has ever existed.

To the Purchasing Agent, J-M Service offers a trustworthy source of information relative to the purchase of supplies recommended by employees or requisitioned by department heads. A J-M representative is at all times glad to be called in consultation upon any subject within the scope of J-M experience. Whether a sale of J-M goods follows is altogether secondary and dependent upon the ability of J-M Service to fulfil the requirement.

This service also offers the Purchasing Agent the advantage of centralized dealing with one house of assured responsibility. This results in greatly simplified procedure in the purchase of supplies, in the settlement of accounts and in the handling of correspondence. It is the business of J-M Service to serve the customer in all possible ways rather than merely to “sell him.”

To the Automobile Owner, J-M Service offers an organization to look after his interests after sale and thus see that each J-M Automobile Accessory he buys continues to render complete satisfaction as long as it remains on his car.

Architectural Acoustics

The J-M Method of Acoustical Treatment corrects reverberation, echoes and other confusing sound defects in court rooms, churches, theatres, auditoriums, offices, etc. Scientific methods; no wires or sounding boards. Will correct existing acoustical defects in any building without interfering with architectural details. Forms part of decorative treatment and is practically impossible to detect.

J-M Acoustical Service

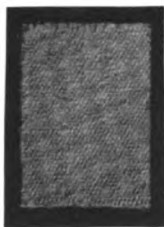
We assume entire responsibility for every J-M acoustical installation. When you place your acoustical problems in our hands for solution you not only get the services of the most advanced acoustical specialists but you have an absolute assurance of satisfactory results, backed by J-M Responsibility, a new order of Service pledged by a company that has achieved an enviable reputation for making good every claim.

Asbestos Fabrics and Specialties

We are prepared to offer exceptional service in this department. This company is the oldest and largest manufacturer of Asbestos goods in the world. The greatest development in the field of Asbestos originated with us and many advancements in the arts and mechanical science have been made possible by use of our Asbestos products.

The Asbestos rock used in J-M Products is quarried from our own mines, in the Province of Quebec, Canada, and is conceded to be the finest in existence. When treated mechanically this product becomes the "long-fibre Canadian Asbestos" which is famous for its fireproof qualities and strength.

All J-M Asbestos Products are made in our own factories. When you purchase a J-M Asbestos Product you therefore get the highest grade material obtainable, manufactured by experts of long experience. Furthermore the satisfactory service of every article sold by us is assured by J-M Responsibility, which stands right back of that product to see that it makes good.



J-M Asbestos Cloth



J-M Asbestos Lead Joint Runner



J-M Asbestos Telephone Blanket



J-M Asbestos Gloves



J-M Asbestos Twine

J-M Asbestos Fibre

The soft, white and exceedingly strong fibres of pure Canadian Asbestos. Can be spun, woven and otherwise manufactured into many useful articles. In addition to its fireproof qualities it is acidproof and practically indestructible.

J-M Asbestos Cloth

Furnished pure and commercially pure, with or without brass wire insertion, in a variety of weaves and weights. Used for brake lining, clothing, filtering, packing, theatre curtains, and many other purposes.

J-M Asbestos Cloth Belts

Made from pure, heavy-woven Asbestos, with or without wire. For conveyer-belts, handling hot slag, metals, etc.

J-M Asbestos Lead Joint Runner

Made of pure Asbestos rope of square cross section provided with a ferrule on each side and a clamping device for fastening on pipe. Fits snugly, preventing leakage of lead. Also no lead left protruding from joint to be chipped off. Quickly pays for itself in lead and time saved. Will not char or burn; practically indestructible.

J-M Asbestos Telephone Blanket

Made of heavy Asbestos cloth, hemmed on all sides, rolled and fitted into metal tube. For smothering fires on the backs of switchboards. Readily accessible and extremely effective.

J-M Asbestos Clothing

Made from pure Asbestos cloth. Very strong and durable. Complete suits, helmets, overalls, coats, leggings, shoes, aprons, caps, gloves, mittens and arm protectors. These garments, being absolutely fireproof, afford the best possible protection for those who work in glass, chemical, iron and smelting plants, etc.

J-M Asbestos Cord and Twine

Strong, hard-twisted; fire- and acid-proof. Used for packing purposes and to suspend metals, retorts, crucibles, etc., in fire contact. Very useful in glass works. Made of standard yarns, pure or commercially pure, sized to bind strands together and give hard, smooth finish.

J-M Asbestos Sewing Twine

A twisted Asbestos thread for sewing asbestos cloth and in chemical plants; also as a packing.

J-M Asbestos Incandescent Lamp Thread

A very fine twisted thread of pure Asbestos for suspending incandescent gas mantles.

J-M Fireproof Rope

Made from pure, long-fibre Asbestos, sized to bind strands together and give hard, smooth finish. For fire escapes, fireproof ladders, etc.

J-M Asbestos Yarn

Made of highest grade long-fibre Asbestos. Commercially or absolutely pure, with or without wire. For packing flexible metallic tubing, braiding over wire, incandescent mantles, spark plugs or any other purpose where a heat-resisting or fireproof material is required.

J-M Asbestos Glassworkers' Materials

Made from Asbestos, hardened by a special process. Will not crack or flake. Sheets for laying out glassware furnished curved, flanged or special shapes. Carry-in shovels, fork tines, bottle rest sheets, tubes and scale discs and snap bottoms. Also tubes of compressed Asbestos fibre for fork tines.

J-M Asbestos Soldering Blocks

For jewelers, silversmiths, dentists, etc. Homogeneous blocks of solid Asbestos which will not flake up under heat. Can be used over and over again and will outlast blocks made from charcoal and other perishable materials. Plain and corrugated.

J-M Asbestos Filtering Films

Made of absolutely pure long Asbestos fibre, felted without any binding material whatever. For filtering water, chemicals, acids, etc. Produces rapid and perfect filtration and cool water.

J-M Asbestos Tent Shields

An Asbestos cloth-wound ring to be inserted in roof of tent to protect canvas from heat of stove pipe. Fits pipe closely, making a support and preventing the escape of heat. Waterproof, flexible and folds without damage of tent or shield.

J-M Asbestos Torch

A pure Asbestos fibre ball, wire-enclosed, with fixture for attaching to handle. When soaked thoroughly in kerosene oil a high broad flame can be maintained for 30 to 45 minutes. The asbestos ball will not burn, and can be used indefinitely. Used for destroying caterpillars' nests, starting bush fires, etc.



J-M Fireproof Rope



J-M Asbestos Yarn



J-M Glassworkers' Materials



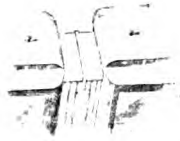
J-M Asbestos Soldering Blocks



J-M Asbestos Torch



J-M Fireproof Glue



J-M Asbestos Diaphragm
Canopy Covers



J-M Asbestos Sill Covering

J-M Fireproof Glue

Made specially for cementing all forms of Asbestos to various surfaces, such as Asbestos fibre to fire-back board, or wherever heat conditions necessitate use of a fireproof glue.

J-M Asbestos Diaphragm Canopy Covers

Made from pure Asbestos cloth, glued at the edges with J-M Fireproof Glue. These covers greatly increase the life of the diaphragms of Pullman cars by protecting them from acid, gases and cinders emitted by locomotive.

J-M Asbestos Sill Covering

A brine-proof and acid-proof material for protecting the sills of refrigerator, freight or stock cars against the absorption of filth.

J-M Slack Adjuster

Takes up slack and adjusts piston travel on foundation brake gears without crawling under truck. Applied to fixed end of floating lever or any part of brake gear where piston travel may be adjusted from one point.

Automobile and Motorboat Accessories

These accessories represent the best products of their respective types on the market. No automobile accessory can become a J-M Accessory unless it measures up to the highest standards of efficiency and passes the rigid series of tests laid down by our staff of Engineers. But over and above this assurance of quality, every J-M Accessory is backed by the guarantee of a nation-wide organization with more than half a century's reputation for fair dealing. J-M Service Stations, located in all of the most important cities of North America give the purchaser of a J-M Accessory still further assurance of continued satisfaction.



Johns-Manville Speedometer



Johns-Manville Tachometer



Jones Hub Odometer



Cable Driven Long Horn



J-M Electric Vibrator Horn



Carter Gravity Gasoline Tank

Johns-Manville Speedometer

Actuated by centrifugal principle, as invariable as the law of gravity. Unaffected by magnetic influence, temperature and altitude. Speed scale has large, easily read figures. Fitted with odometer registering 100,000 miles, and repeat for season mileage and 100 miles and repeat for trip mileage. Special models for Ford cars, commercial vehicles and motorcycles.

Johns-Manville Tachometer

Indicates the number of revolutions per minute of engine shafts. For Motor Boats, locomotives, aeroplanes, etc. Aids in maintaining uniform speed of propellers on twin-screw boats. On aeroplanes, where the sustaining power depends on the motor speed, the necessity of this instrument is obvious. Furnished with dials reading 500, 1000, 2000, 4000 r. p. m., as desired.

Jones Hub Odometer

Records cumulative mileage of commercial vehicles up to 100,000 miles (forward and backward travel). Attaches as hub cap. No flexible shaft, gears or other fittings required. Cannot be removed without breaking seal, and is therefore tamper-proof.

Long Horn

The clear, powerful note of the Long Horn carries its message above the din of city traffic and gets the right of way. Never-failing in action. Strongly constructed; all working parts specially hardened; cut gears; seamless housing and bell. Made in three types: hand-operated, cable-driven and motor-driven. Five models, including special motorcycle and Ford models. All finishes.

J-M Electric Vibrator Horn

Strongest and handsomest horn of its type on the market. Loud commanding tone that gets action. Six or twelve volts; complete with push button and cord.

Carter Gravity Gasoline Tank

Provides a constant supply of gasoline to the carburetor at all speeds, and on any incline or elevation. Has no complicated parts to get out of order; needs no air-tight connections; will last as long as the car. Easily applied—simply attach to one of the engine cylinders.

Carter Carburetor

Multiple-jet principle. Fuel supply automatically governed by the varying suction of the motor. Gives more power, speed, and flexibility. Enables you to throttle down to four or five miles an hour and suddenly jump to forty without a change of gears and without "loading." Makes starting easy in cold weather.

J-M Automobile Clock

A handsome 8-day clock of excellent time-keeping qualities at a moderate price. Sturdily built to withstand shocks and vibrations of the road. Movements permanently enclosed in dust-, moisture- and tamper-proof protecting case attached to bezel. Concealed winding and setting keys and attaching screws. Dash or flush mounting. Finished in black-and-brass, black-and-nickel and all-black.

J-M Lens (Non-Blinding)

Illuminates the roadway clearly, yet does not project a blinding glare into the eyes of approaching motorists and pedestrians. Made of high-grade annealed glass frosted over its entire surface, with the exception of a transparent oval area through which a powerful beam of light is projected forward and downward, effectively illuminating the roadway. The soft glow from frosted portion illuminates front of car and side of road.

Johns-Manville Shock Absorber

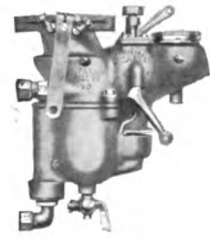
Specially designed telescopic volute spring of Vanadium steel; absorbs the minutest vibration, giving greatly increased motoring comfort and minimizing wear and tear on tires and other automobile parts. Fits springs up to $2\frac{1}{4}$ inches wide.

J-M Tire Pump

Small and compact; measures only $3\frac{3}{4}$ x 3 inches; weighs only $4\frac{1}{2}$ pounds. Simplest of all tire pumps. Anyone can instal it. Nothing to break or get out of order. Pumps only pure, fresh air into the tires; no oil. Inflates a 30 x 3-inch tire in less than one minute, without racing.

J-M Non-Burn Brake Lining

Stops car slowly or quickly, as desired. Frictional heat cannot char or burn it. Oil, gasoline or water cannot injure it. Outlasts ordinary linings. Made of best grade Asbestos reinforced with interwoven brass wire.



Carter Carburetor



J-M Auto Clock



J-M Lens (Non-Blinding)



Johns-Manville Shock Absorber



J-M Tire Pump



J-M Non-Burn Brake-Lining



J-M (Mezger) Soot-Proof
Spark Plug



"Noark" Auto Fuses



J-M Auto Tape



J-M Dry Batteries



G-P Muffler Cut-Out



J-M Windshield Attachment
for Ford Cars

J-M Brake Lining for Ford Cars

A lining of remarkable gripping power and durability, particularly adapted for use on the Ford car. Woven from a specially prepared fabric of great strength and toughness, impregnated with a compound that increases its frictional qualities.

J-M (Mezger) Soot-Proof Spark Plug

Double chamber construction prevents short circuiting as result of carbon deposit. Will not leak compression. For all makes of cars and motorcycles. Two-unit design permits assembling and disassembling without removing from cylinder.

"Noark" Auto Fuses

Specially designed for the protection of automobile lighting circuits. "Noark" Fuses operate, as their name implies, with "no arc" or flash, and are therefore specially adapted for use on automobiles, where an exposed flash might ignite gasoline vapors.

J-M Auto Tape

For insulating automobile and garage wiring. A closely woven fabric thoroughly impregnated with insulating compound, insuring great insulating efficiency and adhesive power.

J-M Dry Batteries

Repeated tests show that J-M Dry Batteries give better and longer service for ignition work and continue to give it for a longer time than any other dry cell. Guaranteed to give satisfaction or purchase price refunded.

G-P Muffler Cut-Out

Most efficient cut-out on the market. Designed on practical lines. When cut-out is open, the muffler is completely shut off, the valve making correct angle to deflect exhaust gases freely without possibility of back pressure.

J-M Windshield Attachment for Ford Cars

Converts a standard Ford windshield into one that may be easily and quickly adjusted. Affords perfect rain-vision and ventilation in all weathers. Will fit any model. Easy to install. Made of pressed steel. Finished in black enamel.

J-M Tirenew

A compound of pure Para rubber which, when painted on tires, penetrates cuts and crevices and water-proofs the fabric at the base. This protects the fabric from oil and moisture, prevents decay, and adds to the life of the tire. Also makes tires look clean and fresh.

J-M Narco Tire Cut Filler

"The Motorist's Self-Vulcanizer." A semi-liquid rubber compound for repairing and healing casing cuts and abrasions. Becomes an integral part of the tire and solid as the tread itself. Eliminates the use of rubber cement, and kneading of mastic.

J-M Narco Rubber Reviver and Refinisher

Makes auto tops look like new, and waterproofs them. A rubber compound, not a shiny varnish. The protecting coat is invisible. Will not come off, crack, chip or check. For all textiles and rubber fabrics, mohair, pantasote, etc.

J-M Narco Non-Inflammable Rubber Cement

A highly perfected rubber cement of extraordinary adhesion for repairing inner tubes, water bags, rubber boots and general patching. Contains no gasoline or benzine. Non-explosive and non-deteriorating.

J-M Narco Cementless Patches

Remarkable adhesive qualities. Require neither acid nor cement. Molded with feather edge; very flexible; conform to tube. Three sizes, round and elliptical. Fulfill nearly every patch requirement.

J-M Narco Ford Tire Repair Outfit

An economical outfit for making easy and inexpensive home and roadside repairs. Contains a repair for emergency tire troubles and several preventives. In substantial wooden box that can be carried in tool kit.

J-M Narco Vulcanizing Outfits

An indispensable convenience for the motorist operating a small vulcanizer. Outfits contain a can of J-M Narco Five-Minute Cure Vulcanizing Cement, and an assortment of tube and casing Stocks.



J-M Tirenew



J-M Narco Tire Cut Filler



J-M Narco Rubber Reviver and Refinisher



J-M Narco Non-Inflammable Rubber Cement



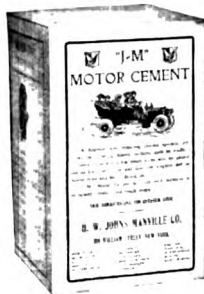
J-M Narco Cementless Patches



J-M Narco Ford Tire Repair Outfit



J-M Narco Repair Outfit

J-M Narco Five-Minute Cure
Vulcanizing Cement

J-M Asbestos Motor Cement



J-M Fire Extinguisher

J-M Narco Repair Stocks

For professional and home vulcanizing. The quality of these stocks is the highest; they can be depended upon to produce perfect repairs. J-M Narco Five-Minute Cure Tube Stock flows freely and is as elastic as the tube itself, and makes a durable cure in five minutes. This line includes five other repair stocks which cure in from twenty to forty-five minutes; shades: white, light gray, gray and slate.

J-M Narco Auto Patching Cement

A highly concentrated, exceptionally strong cement for repairing tubes and putting patches on any fabric. It dries in the air quickly, cements evenly and firmly, and makes a repair that is dependable.

J-M Narco Five-Minute Cure Vulcanizing Cement

This cement is invaluable for making repairs in cases where every minute counts. As its name indicates, it makes a repair in five minutes. It is very strong and can be depended upon to give absolute satisfaction on any hurry-up repair work.

J-M Narco General Vulcanizing Cement

We recommend this cement for general all-around vulcanizing. The nature of the solvent used ensures a repair free from bubbles, which so frequently prevent good results. Its weld is uniform, strong and lasting. Very economical.

J-M Asbestos Motor Cement

Made of asbestos, forming an absolutely fireproof insulation for heated surfaces of all kinds. Particularly adapted for cylinders, mufflers, etc., on gas and gasoline engines. Easily applied, is very adhesive and withstands considerable vibration and rough usage without damage.

J-M Fire Extinguisher

The ideal extinguisher for automobiles and garages. Throws a 50-foot stream that puts out gasoline and oil fires. Fluid will not injure automobile upholstery and fittings, nor corrode internal parts of extinguisher. Anyone can operate it. Made of best quality brass or nickel. Approved by National Board of Fire Underwriters.

Building Materials

The quality of every J-M Building Material is guaranteed by the H. W. Johns-Manville Co. Satisfactory performance is vouched for by J-M Responsibility, which means that this great company, with its enormous resources and reputation for integrity, stands back of its products and sees to it that they give you the service you have a right to expect.

At each of our branches we carry full stocks of building materials, thereby insuring prompt deliveries, no matter where you are located. We also maintain at each of these branches a fully organized Contract Department for the application of our materials. This department includes a force of engineers and skilled mechanics familiar with the application of our products. Estimates for contract work at any point furnished on request. Without obligation to you our engineers will be glad to render advice on problems pertaining to roofing, insulating, sound-deadening, fireproof construction, etc.

This is J-M Service. J-M Responsibility and J-M Service make a combination that is positive assurance of satisfaction in any transaction with this company.



J-M Asbestos Ready Roofing

Philadelphia City Hall Roofed
With J-M Asbestos Built-Up
RoofingJ-M Asbestos Corrugated Roofing
Showing Construction

J-M Asbestoside



J-M Regal Roofing



J-M Transite Asbestos Shingles

ROOFING

J-M Asbestos Ready Roofing

Composed of layers of Asbestos felt cemented together with a Trinidad Lake Asphalt compound, forming a light-weight roofing that is virtually a sheet of pliable stone. Contains nothing to rot or dry out. Never needs coating or painting. Gives excellent fire protection. In rolls and sheets. Easy to lay. Manufactured in different thicknesses and weights.

J-M Asbestos Built-Up Roofing

Composed of sheets of J-M Asbestos Ready Roofing and Asbestos felt, built up on the roof and cemented with a Trinidad Lake Asphalt compound, forming a permanent, highly fire-resistant roofing. Needs no paint or gravel. For industrial plants, office buildings, etc. Especially adapted to flat or slightly pitched surfaces. Also the ideal roofing for applying over steep or flat concrete roofs.

J-M Asbestos Corrugated Roofing

Composed of layers of impregnated Asbestos reinforced with corrugated sheet metal. Can be applied directly on the rafters and studding. Forms a permanent, highly fire-resistant roofing especially adapted to sheds, warehouses, freight terminals, etc. Makes buildings warmer in winter and cooler in summer.

J-M Asbestoside

Composed of layers of Asbestos felt cemented together with a Trinidad Lake Asphalt compound, forming a light-weight siding that is virtually a sheet of flexible stone. Never needs coating or painting. Gives excellent fire protection. Recommended for factories, ice houses, storehouses, garages, poultry houses, stables, etc. Makes buildings warmer in winter and cooler in summer.

J-M Regal Roofing

Made of extra quality wool felt densely saturated with a Trinidad Lake asphalt compound. The highest grade "rubber" type roofing on the market. Gives excellent service in any climate. Retains its life indefinitely because its waterproofing oils are least affected by the elements. Not affected by extremes of temperature. For factories, barns, etc. In rolls, ready to lay. Furnished with J-M cleat for applying. It grips like a vise.

J-M Transite Asbestos Shingles

A fireproof, practically indestructible substitute for wooden shingles, slate, tile, etc. Made by moulding pure Asbestos fibres and Portland Cement into a solid mass under hydraulic pressure. No layers or laminations to curl or separate. They never require paint, become stronger with age and actually outlast the building they cover. In several colors and many shapes and sizes.

J-M Asphalt Shingles

Made of wool felt, densely saturated and coated with a special asphalt. Surface covered with flaked slate, green or red in color, which is rolled in while the asphalt is hot. The slate surface gives these shingles a distinctive, handsome appearance and adds to their fire and wear-resisting qualities.

ROOFING ACCESSORIES

J-M Ajax Asphalt Cement

A combination of Trinidad Lake and other natural asphalts softened with the very best asphaltic oils. The best waterproof cement ever discovered. It will cement layers of roofing material together securely and permanently.

J-M Regal Anti-Leak Stick

A tough, rubbery compound that has great adhesive properties and makes a permanent repair when applied like putty to tin, iron, slate, shingles and composition roofs, wooden and iron tanks, washtubs, boats, etc. Stops leaks instantly. A very handy article to have.

J-M Elastic Roof Putty

A plastic, non-drying cement without an equal for repairing cracked joints, nail holes and breaks in slate, tile, tin and iron roofs, pointing around dormer windows, skylights, etc. Withstands the contraction and expansion caused by weather changes. Various colors.

J-M Regal Roof Coating

A pure asphalt coating for use on J-M Regal and other "rubber" roofings; also for felt, tin and sheet-iron roofs. This material is absolutely free from coal tar and pitch and retains its waterproofing qualities much longer than any similar product, serving to prolong the life of the roofing and making it the most economical coating. It comes in black and colors. It will turn an old, unsightly roof, into a good, attractive-looking one.

J-M Roofing Brushes

For coating roofs, spreading cement on laps, etc. Excellent quality, and will give good service. Furnished with 2, 3 and 4 knots, in two grades.



J-M Asphalt Shingles



J-M Ajax Asphalt Cement



J-M Regal Anti-Leak Stick



J-M Elastic Roof Putty



J-M Regal Roof Coating



J-M Roofing Brushes



J-M Roofing and Insulating
Felt



J-M Asbestos Slaters' Felt



J-M Regal Sheathing



J-M Keystone Hair Insulator



J-M Sea Grass Lining

INSULATING MATERIALS

J-M Roofing and Insulating Felt

Pure Asbestos felt thoroughly saturated with a Trinidad Lake asphalt compound. Weather-proof, waterproof and acid-proof. Will not rot or deteriorate. For use under weather-boards as linings for slate and metal roofs, refrigerator cars and other roofing, waterproofing and sheathing purposes. Made of fibrous rock—practically imperishable.

J-M Asbestos Slaters' Felt

Pure Asbestos felt saturated with a Trinidad Lake asphalt compound. Due to the absence of organic matter it is odorless, weather-proof, and will not rot. For use as an insulating and waterproofing material over roof and weather-boards, as a lining for J-M Transite Asbestos Shingles, slate, shingles, etc.

J-M Regal Sheathing

An excellent sheathing for use under slate, roofs, weatherboarding, etc. This material is superior to the highest grade building papers. Serves as a sound deadener and also keeps buildings warmer in winter and cooler in summer.

J-M Keystone Hair Insulator

Chemically cleansed cattle hair securely stitched between two layers of heavy, non-porous building paper. Absolutely vermin-proof and non-odorous. Will not rot, deteriorate, pack down, attract moisture or carry flame. Keeps buildings warmer in winter and cooler in summer. An unequalled sound deadener when placed between walls and floors. Will save its cost over and over again in coolness and comfort.

J-M Sea Grass Lining

Cured eel grass between two layers of building paper. Permanently sanitary, odorless and vermin-proof. Will not deteriorate, pack down or carry flame. An effective insulation against heat, cold and sound.

J-M Salamander Insulation

Layers of chemically treated hair between layers of waterproof and Asbestos papers with a cloth backing, all carefully stitched together. Weighs only 11 ounces to the square foot. Adapts itself readily to curvature of decks, etc. Can be cut into small pieces for spaces between posts, braces, carlines, etc., which are absolutely necessary to insulate. Furnished in 2- and 3-ply.

J-M Nycinsul

Consists of hair felt securely stitched between two layers of specially prepared fireproof membrane. Possesses the same general characteristics as the material named above, but is more board-like in character. In two thicknesses, $\frac{1}{4}$ - and $\frac{1}{2}$ -inch.

J-M Ceilinite

Composed of pure, long Asbestos fibres, made into a felt and reinforced on the back with pure Asbestos cloth. A strong, flexible, fireproof material for interlining steel passenger cars between the inner and outer shells.

J-M Standard Hair Felt

This material is made from selected, sterilized cattle hair, by an improved felting process that gives highest insulating efficiency. It does not pack down, settle, dry out or rot. Forms a very economical and satisfactory insulation for Refrigerator cars. Standard thickness one inch. Other thicknesses 14 to 2 inches.

J-M Weathertite Building Paper

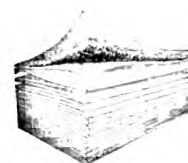
Highest grade paper treated with non-drying, odorless asphalt. Waterproof and vermin-proof. Insulates buildings effectively against heat and cold. As this material is not brittle it does not scale or crack and therefore retains its insulating efficiency.

J-M Red Rosin-Sized Paper

For lining floors and walls and as a weather protection under clap boards, etc. Soft, flexible and easily applied. Adapts itself to all conditions where any sheathing paper can be used.

J-M Non-Burn Asbestos Felt and Roll Board

A fireproof material for lining side walls, floors, ceilings, wood partitions, etc. Also for covering heater pipes, etc. Will not disintegrate. Odorless and vermin-proof.



J-M Nycinsul



J-M Ceilinite



J-M Weathertite Building Paper



J-M Non-Burn Asbestos Felt and Roll Board



J-M Asbestos Sheet Millboard



J-M Indent Fireproof Paper

J-M Asbestos Sheet Millboard

Made from pure Asbestos fibre. Specially adapted for fireproof linings of floors, partitions, ceilings, elevator shafts, etc. Also for packings, fire screens, lining for ranges, stoves, grates, gas backs, etc. Fireproof and acid-proof.

J-M Asbestos Paper

A fireproof felt made of pure Asbestos fibre. Used as a fire retardant between walls and floors; also for wrapping heater pipes, etc.

J-M Indent Fireproof Paper

Composed of two layers of heavy Asbestos felt cemented together with fireproof glue, one plain and the other deeply indented. A tough, flexible and superior insulator against heat.

J-M Wool Deadening Felt

Specially recommended for lining under parquet and hardwood floors. The best material for this purpose on the market, giving far better results than ordinary sheathing paper.

J-M Transite Asbestos Wood

A fireproof, practically indestructible substitute for wood, composed of Asbestos fibre and hydraulic cements. Can be worked with wood-working tools and takes nails and screws. Readily painted or varnished or may be highly polished. Recommended for fireproof partitions, wainscoting, mouldings, ceilings, portable houses and garages, fireproof cabinets, acid and other tank linings, etc.

J-M Transite Asbestos Wood Smoke Jacks and Ventilators

Made of Asbestos fibre and binding cement, forming a practically indestructible substitute for wood. Superior to metal, tile and wooden smoke jacks. Proof against fire, fumes, acid and weather, and possesses great durability and strength. Does not corrode or collect condensation, and being light in weight it does not require roof trusses of unusual strength.

J-M Asbestos Stucco

Asbestos fibre and Portland cement, forming a stucco of great durability, which is practically unaffected by water or the most severe climatic changes. Being free from sand it is not subject to unsightly stains. An excellent insulator against heat and cold. Finished in many beautiful textures.

J-M Asbestos Wall Plaster

A tough, fireproof plaster. Composed of pure, uniformly ground Asbestos rock and fibres. Forms an effective barrier against the transmission of flame from one apartment to another. Does not chip, crack or crumble.



J-M Transite Asbestos Wood



J-M Transite Asbestos Wood
Smoke Jacks and Ventilators



Residence Covered with J-M
Asbestos Stucco

Cements

In this field we are able to offer our clients a service that is absolutely unique. Our staff of laboratory experts, working under practical conditions, have developed refractory cements with the result that, no matter what your requirements are, we can make your fire brick last longer. Nowhere will you find refractory cements that give such lasting service and that represent such big economies as J-M High Temperature Cements.

These cements pay for themselves many times over by the saving in cost of repairs as well as by eliminating the loss due to frequent shut-downs. J-M High Temperature Cements are made of Asbestos and other highly refractory materials, and resist temperatures up to 3100 degrees Fahr., a far greater heat than any fire clay can withstand.

HIGH TEMPERATURE CEMENTS

J-M High Temperature Cement No. 31

Recommended for use where temperatures range from 1400 to 3100 degrees Fahr., in setting up chrome, silica and fire clay brick. Unequaled as a fire brick mortar where only heat is encountered (it is not resistant to metals). Used for boiler and furnace settings, gas producers, annealing furnaces, brick kilns, cement kilns, reverberatory furnaces, etc. It can also be moulded into door jambs, assayers' furnaces, and fire-door linings.

J-M High Temperature Cement No. 30

An ideal one-piece lining for brass furnaces, assayers' crucibles, oil burning, tilting and rotary furnaces, etc. Can be moulded into any desired shape. In many cases it has been found to last from nine to twelve months and longer, while relining or repairs were necessary every three or four weeks when fire-brick was used.

J-M High Temperature Cement No. 26

Due to its high mechanical strength this cement is without an equal for many conditions where temperature does not exceed 2600 degrees Fahr. Can be used for building stoker grates in B. & W. boilers, baffle walls, door jambs and lining doors in low temperature furnaces, lining covers of brass-melting furnaces, as a fire brick mortar for patching doors in reheating furnaces, etc.

J-M High Temperature Cement No. 25

A cement of high mechanical strength for lining ladles, for brass, copper and iron, lining rotary and tile (oil burning) furnaces, repairing fire brick lining, and for all sorts of plastering in furnace settings.

J-M Asbestos Retort Cement

Indispensable in gas and chemical works for repairing broken clay and iron retorts and pipes, cementing fittings and flange joints, and cementing joints in stone, wood and metal. It hardens rapidly after application. Withstands temperatures as high as 1600 degrees Fahr. Not injured by nitric or sulphuric acid, petroleum oils, etc.

J-M Brickline Fire Brick Coating

A cement of semi-liquid consistency ready for immediate use. It possesses high heat-resisting properties, is very adhesive and will vitrify under intense heat, binding the bricks together with great firmness. Forms a glaze over the surface of fire brick, preventing clinkers from forming, and better enables the lining to resist abrasions.



J-M High Temperature Cement
No. 31



J-M High Temperature Cement
No. 30



J-M High Temperature Cement
No. 26



J-M High Temperature Cement
No. 25



J-M Asbestos Retort Cement



J-M Phoenix Asbestos Stove Lining



J-M Asbestos Furnace Cement



J-M Arido Dry Furnace Cement



J-M Asbestos Sponge Cement Felting

STOVE AND FURNACE CEMENTS

J-M Phoenix Asbestos Stove Lining

Asbestos and binding cements. A perfect substitute for and a great improvement on the old style fire brick for lining stoves, ranges, furnaces, furnace doors, etc. It costs less than fire brick. It is furnished in dry powder form, is always ready for use, conforms to irregular surfaces, is easily applied, does not burn out and prevents the adhesion of clinkers.

J-M Asbestos Plastic Stove Lining

Asbestos and other fire-resisting materials prepared ready for use in the form of a plastic cement, easily applied with a trowel. A durable and economical lining for stoves, ranges, furnaces, furnace doors, etc. Does not warp. Clinkers will not adhere to it.

J-M Asbestos Furnace Cement

A durable, ready-to-use cement for setting up and repairing broken joints in furnaces, heaters, ranges, and stoves. It is prepared ready for use, adheres firmly to castings and tin, and sets a few hours after application. It is inodorous and effectually prevents escape of smoke and gases, thus insuring perfect draft.

J-M Arido Dry Furnace Cement

Makes permanently tight joints when setting up or repairing furnaces, heaters, ranges, stoves, etc. Matches the color of iron when dry and does not leave an unsightly joint. It adheres firmly, is not affected by fire, is absolutely acid and gas-proof, and does not crack or shrink away from the iron.

INSULATING CEMENTS

J-M Asbestos Sponge Cement Felting

Asbestos fibre and sponge, forming an exceedingly porous covering with high insulating properties and large covering capacity. Best grade of plastic insulating material on the market. For finishing over sheets and blocks, for insulating large heated surfaces, and for irregular surfaces and fittings where it is impossible to apply sectional pipe coverings or blocks.

J-M Asbestos Fire-Felt Cement

This form of insulation, owing to its lightness and heat-insulating qualities, is recommended where a less expensive insulation is required than the blocks and cement finish. For insulating large heated surfaces it will be found a most satisfactory insulation. Or if desired it may be used for finishing over sheets and blocks.

J-M Magnesia Cement

A mixture of carbonate of magnesia and Asbestos fibre, forming a light, highly efficient insulation for high pressure and superheated steam surfaces. Made in three grades, containing respectively 85 per cent., 50 per cent. and 35 per cent. magnesia.

J-M Asbestos Hot Blast Cement

This cement is composed of entirely fireproof materials. It is specially recommended for covering superheated steam surfaces and surfaces that are liable to become red hot.

J-M Sheep's Wool Cement

Especially adapted to steam surfaces exposed to the weather, such as in boats, saw mills and mines. It can be re-mixed and re-applied without loss. Dries in a few hours, becoming a tough, compact mass.

J-M Cement No. 400

A cement of high insulating efficiency and large covering capacity for use on steam pipes and other heated surfaces. It finishes up particularly white and hard and when trowelled down carefully can be used on fittings without canvas.

J-M Asbestos Motor Cement

Made of Asbestos, forming an absolutely fireproof insulation for heated surfaces of all kinds. Particularly adapted for cylinders, mufflers, etc., on gas and gasoline engines. Easily applied, is very adhesive, and withstands considerable vibration and rough usage without damage.

PIPE JOINT CEMENTS AND METALLIC COMPOUNDS

J-M Acid-Proof Cement

Makes permanently tight joints in terra cotta pipes used for carrying sulphuric, nitric, muriatic acid, etc., thereby eliminating the possibility of leakage, with consequent damage to building, machinery and stock. Also used for lining tanks in which acid is stored.

H-O Pipe Joint Cement

Makes a perfectly tight joint that can be easily disconnected for steam, water, gas and air pipes. Also used as a putty for connecting up sink wastes, bowls, etc. Is not oily and contains absolutely no poison, as do red lead and other cements. Does not wash out of pipe or stain marble or tile. Cheapest pipe joint cement on the market.



J-M Asbestos Cement



J-M Asbestos Motor Cement



H-O Pipe Joint Cement



J-M Leak-No Metallic Compound



J-M Ferro Compound



J-M Ferotite Compound



J-M Ajax Asphalt Cement

J-M Leak-No Metallic Compound

A metallic compound in powder form that permanently repairs cracks and stops leaks in pipes or castings of iron or steel. Amalgamates perfectly with the metal. Holds any pressure up to 1,000 pounds and resists oil, acid, gas and any heat that iron will stand. Invaluable for engine builders, railroads, steamfitters, plumbers, etc.

J-M Ferro Compound

A chemical iron compound for smoothing over and filling up blow holes, sand holes, etc., in iron and steel castings. It metallizes in a few hours and becomes part of casting. When hard it is the same color as cast iron. An absolute necessity in iron foundries, machine shops, etc.

J-M Ferotite Compound

A liquid material for repairing cracks, in gas-engine cylinder heads or castings which are hollow and contain one or more walls. Metallizes in a few hours and becomes a part of the casting.

ROOFING CEMENT

J-M Ajax Asphalt Cement

A combination of natural asphalts softened with the very best asphalt oils. Unequaled for patching roofs and laying built-up roofing.

DIELECTRIC CEMENTS

For use in connection with electrical work. (See page 42 under head of Electrical Supplies.)

Cold Storage Insulation Materials

Before your refrigerating requirements can be met successfully the conditions of your plant must be carefully studied. It isn't enough to simply apply any insulating material that suggests itself.

We are insulation engineers of many years experience and are prepared to plan and install for you the type of insulation that best meets your demands. Many of the largest refrigerating plants, packing houses, ice houses, ice cream factories, cold storage warehouses, refrigerator car manufacturers, etc., have taken advantage of J-M Insulating Service.

Because of the fact that we manufacture all of the approved insulating materials known to modern refrigerating science, our suggestions are made absolutely without prejudice. Our voluntary acceptance of entire responsibility for the satisfactory performance of every form of J-M Cold Storage Insulation is covered by J-M Responsibility, a term that stands for a business principle stronger than any guarantee ever written.

When planning the installation of cold storage insulation the advice and co-operation of our Insulation Engineers is yours for the asking. There is no charge for this service, and no obligation on your part.



J-M Pure Cork Sheets



J-M Standard Hair Felt



J-M Mineral Wool

J-M Pure Cork Sheets

Composed of large granules of cork put through an oven at a temperature of about 500 degrees Fahr., thereby releasing the natural gum. When compressed under heavy pressure the gum cements the granules together, forming a strong, durable board. Due to the large number of "dead air" cells it contains, this product has highest maintained insulating efficiency for cold storage plants, breweries, fur storage rooms, etc. Approved by National Board of Fire Underwriters.

J-M Impregnated Cork Sheets

These sheets consist of pure granulated cork mixed with pitch binder. They have excellent heat-insulating efficiency and are particularly adapted to floor and wall work under conditions where excessive moisture is encountered.

J-M Granulated Cork

Pure, high grade granulated cork for general insulating purposes. Furnished in three grades as follows: (a) Unscreened granulated cork containing very finest to coarsest granules. (b) Fine regranulated; finest granules only. (c) 12-20 granulated; the fine material screened out of unscreened granulated.

J-M Standard Hair Felt

Made from selected cattle hair by an improved felting process. Used for lining refrigerators, refrigerator cars and ice houses. Also for insulating hot water pipes and protecting cold water pipes against freezing.

J-M Mineral Wool

This is a product of iron slag and is an especially clean, long-staple material free from sulphur. It is very light and fluffy and consequently a superior insulator.

J-M Guya Fibre

A natural vegetable fibre not subject to deterioration. Due to its fine texture, confining a large number of "dead air" cells, it possesses excellent insulating efficiency. Particularly adapted as a refrigerator lining because it acts as a germicide. Absolutely odorless.

Audiffren-Singrun Refrigerating Machine

A practical refrigerating and ice-making machine on a small scale suitable for cold storage plants, hospitals, hotels, cafés, clubs and domestic use. Operates on little power. Simple in construction. Any intelligent person can run it. Absolutely safe; no ammonia used; no connections to leak. Odorless. Doesn't have to be recharged or packed.

J-M Fibre Conduit

For conveying electric cables underground. For description see page 40, under heading of ELECTRICAL.

J-M Sectional Underground Conduit

A high grade vitrified tile for underground steam, hot water, oil pipes, etc. Permits the utilization of exhaust steam for heating purposes. Carries steam thousands of feet with practically no radiation or condensation, making it possible to heat a number of buildings from a centrally located plant, at a saving of fuel, labor and space. Easy to install.

J-M Conduit Filling

This is the ideal conduit insulation. It is composed of ground cellulose and shredded sponge, mixed with asbestos fibre. It is used especially with our J-M Sectional Conduit.

This material is not subject to disintegration by boiling in live steam, nor does soaking in water affect it. It is absolutely free from any unpleasant odor.



Audiffren-Singrun Refrigerating Machine



J-M Fibre Conduit



J-M Sectional Underground Conduit



J-M Conduit Filling

Electrical Materials

The efficiency of Johns-Manville Service, like Rome, was not built in a day.

It has taken half a century to be able to offer what we do to the Electrical Field. And this is probably why we are known generally as a "long established concern."

What we are anxious to do, however, is to demonstrate to those who know us generally, how profitable it is to know us intimately. To know what we make, how well we make it, how we market it, and the way we back up our product.

Johns-Manville Service is the growth of a constructive marketing idea that started from three definite principles: to be honest, painstaking, and reliable.

We have never willfully sacrificed this ideal, and we never will.

The element of risk or chance does not figure in your negotiations with Johns-Manville Service.

If there is any chance to be taken we assume it. This is Johns-Manville Responsibility.

This principle, in addition to assuring safety to our customers, keeps us automatically informed as to the performance of our product and the value of our service. Thus you are doubly insured of reliable merchandise intelligently marketed.

"Noark" Enclosed Fuses

Never fail to blow at the proper time and under the exact conditions claimed, thus affording absolute protection at all times. They automatically indicate when blown and are extremely accurate. Operate with no arc, flame or explosion, and can therefore be refilled repeatedly at our factory. Made according to N. E. C. Standard. Approved by Underwriters' Laboratories.

"Noark" Fuse Boxes

Embody the latest features in protective apparatus for this purpose. Suitable for almost any form of installation in connection with electric light and railway work. Cast iron, substantial construction. Water-tight and weather-proof types. One-, two- and three-pole; 250 to 2,500 volts; N. E. C. Standard.

"Noark" Service Boxes

A combination cut-out and switch for open wiring or wiring in conduit, consisting of substantial cast iron box with fuse carrier hooks in cover. A quarter turn of the handle permits cover to be raised without disturbing fuses. Two- and three-pole; 250 to 600 volts. Water-tight and weather-proof types can be sealed to prevent tampering. Approved by Underwriters' Laboratories.

"Noark" Subway Boxes

For use in manholes or other underground installations where water-tight boxes are essential. Made of cast iron, ribbed to give greatest strength consistent with weight. Box and cover are provided with planed flanges between which a soft rubber gasket is clamped. Brass nuts prevent rusting. Two hundred and fifty to 2,500 volts. For all requirements of underground distribution.

"Noark" Primary Fuse Boxes

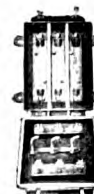
Unaffected by rain, sleet, snow, shorts or surges. Porcelain carrier handle makes fuse renewal easy without danger of touching live parts. For potentials not exceeding 2,500 volts. Tested at 400 per cent. of working voltage at factory. Admirably adapted for the protection of transformers, arc lighting circuits and branch circuits. For underground or aerial service on the line or in power stations.

"Noark" Universal System

Possesses great advantages over any appliances serving any particular one of the great variety of purposes for which the units and co-operative elements of the Universal System may be combined to serve. With a supply of base block units, protective cabinet, meter adapter, load side device support and switch handle, service connection appliances of any desired character may be made up as required. Approved by National Board of Fire Underwriters.



"Noark" Enclosed Fuse



"Noark" Service Box



"Noark" Subway Box



"Noark" Primary Fuse Box



"Noark" Universal System, Meter Testing Cutout with Meter Adapter



Giant Strain Insulator



Feed Wire Insulator

J-M Metallic Sand Spout for
Steel Cars

Rail Bond

"Moulded Mica" Weatherproof
Sockets

Overhead Trolley Line Materials and Mine Supplies

Designed to meet all the requirements of either bracket-arm or cross-span types of suspension. Adapted to direct or alternating current systems. Hangers, pull-overs, trolley suspension yokes, insulated bolts and insulated turn buckles. Insulation of Moulded Mica best known weather-resisting material.

Giant Strain Insulator

As its name implies, a giant in strength and insulating qualities. The acknowledged standard, having largely superseded other forms for similar purposes. Parts under strain made of heavy sheet mica. Other parts and exterior insulated with our well-known Moulded Insulation. Thousands in use under the most severe conditions.

Feed Wire Insulators

These insulators afford large surface insulation and are unequalled for power and lighting circuits. Designed particularly to sustain heavy weights. Made of our well-known moulded Insulation. Illustration shows our Toggle Clamp Feed Wire Insulator, in which the pivoted jaws automatically clamp the wire with a powerful toggle action which effectually prevents wire from slipping or chafing.

J-M Metallic Sand Spout for Street Cars

Most durable sand spout on the market. Made of strong metal ribbon wound spirally, with edges crimped in. Cannot break square, flatten or bend beyond the give of its interlocking metal spirals. Cannot unwind if it strikes an obstruction. Withstands a crushing strain of 300 pounds to each four turns, and a pulling strain of 1,000 to 3,000 pounds.

Rail Bonds

For use under the joint plate, where the space is usually restricted, we recommend form "A" Ribbon Bond illustrated herewith. The conductor of this bond is composed of thin copper ribbons pressed into the desired shape. We also make several other types of rail bonds with double and single cable conductors and single conductors of solid wire. Separate bond terminals for bonding special work are furnished drilled and tinned for soldering to conductor. We will be glad to submit recommendations and drawings to meet any conditions.

"Moulded Mica" Weatherproof Sockets

Without an equal for outdoor use, street decoration, parks, etc. Also for paper mills, breweries, laundries, tunnels, mines and other damp places. Absolutely waterproof and possesses the highest insulating qualities. Will not break or crack like porcelain. Practically indestructible.

Moulded Mica Insulation

This insulation has greater lasting qualities than any other material on the market. It also possesses remarkable mechanical and dielectric strength. The binder is pure shellac with no adulterations. Adapted for special moulded parts where great resistance to heat is not required. Can be moulded into any desired shape.

Vulcabeston Insulation

For over twenty-five years the standard material for use in controllers, motors, generators, mining machinery and for magnet spools, etc. Made of rubber and Asbestos, forming a compound that withstands temperatures up to 550 degrees Fahr. without warping, swelling or softening. Has a dielectric strength of ninety volts per mil and is extremely tough.

J-P No. 201 Stock

An Asbestos compound with a special binder. This material is moisture-proof; withstands temperatures up to 500 degrees Fahr. without softening or warping, and has a dielectric strength of about 180 volts per mil. Has an extremely wide range of uses. Specially adapted for moulded parts of automobile starting and lighting equipments, complicated forms embodying metal parts, etc.

J-P Bakelite

This material has great dielectric and mechanical strength and is impervious to moisture, oil and most acids. It takes a very high finish and is therefore recommended for use in connection with highly finished apparatus of all kinds. In natural, black or red colors. Easily moulded into the most complicated shapes.

J-M Electrobestos

An insulating material composed largely of Asbestos, possessing great dielectric strength and high heat-resisting qualities. Used extensively by leading electrical manufacturers for arc deflectors, parts for heating devices, rheostat insulators, arc lamp bases, flaming arc lamp discs, arc deflectors for controllers, spools, bushings, etc.

J-M Hard Fibre

A tough, resilient material composed of high grade selected cellulose fibre. Has high dielectric strength, withstands a hard hammer blow, can be worked with metal-working tools and is susceptible of a high polish. Extensively used in the manufacture of electrical apparatus. Made in sheets, tubes, rods and washers.



Moulded Mica Insulation



Vulcabeston Insulation



J-P No. 201 Stock



J-P Bakelite



J-M Electrobestos



J-M Fibre Conduit

J-M Ebony Asbestos Wood
Switchboard

J-M Transite Asbestos Wood



J-M Jomanco Tape



J-M Alpha Rubber Tape



J-M Splicing Compounds

J-M Fibre Conduit

Made from compressed wood pulp and saturated with a bituminous compound that serves as a preservative. Has an average puncture test (dry) of 32,000 volts for one-quarter-inch thickness. Light weight, therefore easy and inexpensive to lay. Smooth bore, no cable abrasions. Practically unbreakable; will not warp, split or decay. Approved by Underwriters' Laboratories.

J-M Ebony Asbestos Wood

Composed of Asbestos fibre and insulating and moisture-proofing materials. A two-inch thickness fails to puncture at 40,000 volts. Has great mechanical strength and is impervious to oil and water. Easily machined and takes a good finish. Particularly recommended for switchboards, panel-boards, switch and fuse bases, insulating barriers, etc.

J-M Transite Asbestos Wood

A fireproof, practically indestructible material composed of Asbestos fibre and hydraulic cements. Can be worked with wood-working tools. Has great heat-resisting qualities and mechanical strength. Ideal for bus, bar barriers, transformer doors, high tension oil switch compartments, fireproof partitions, ceiling and flooring, electric car construction, etc.

J-M Jomanco Tape

Made of an extra tough, closely woven fabric, uniformly and heavily coated on both sides with compound. For permanent underground, subway, railway signal and general outdoor work. Most economical because it is of unusual quality.

J-M Alpha Rubber Tape

Highest grade. Made of pure Para rubber. Forms a homogeneous mass when applied. Joints made with Alpha are impervious to moisture. This tape is absolutely waterproof and possesses greater insulating efficiency than the original insulator.

J-M Splicing Compounds

High grade rubber compounds of long life and great insulating efficiency. For high voltage service, transformers, motor-generator and switchboard leads, underground and exposed wiring requiring a rubber water-tight joint having maximum electrical strength. Made in two brands to meet different service requirements—"Brooklyn" and "Phoenix."

J-M Niagrite Fireproof Cable Insulation

A flexible, fireproof tape made of Asbestos, impregnated with a waterproofing and insulating compound. Forms a solid, one-piece casing, which becomes as hard as stone when dry. No metallic fastenings are necessary. Makes fire absolutely impossible from short circuits on adjacent high and low pressure cables.

J-M Asphalt Cable Tape

This is by far the best weather-proofing and acid-proofing tape manufactured. It is not affected by climatic conditions, and retains its flexibility and insulating qualities indefinitely. Both sides of the fabric are heavily and evenly coated with asphalt compound. Contains no rubber and will not vulcanize.

J-M Asbestos Listing (Woven Tape)

A fireproof, flexible woven tape suitable for wrapping all forms of electrical wires. Heavy listing, about $\frac{1}{8}$ -inch thick, is made in widths from $\frac{1}{2}$ to 4 inches, pure or commercially pure. Fine listing for winding armatures, small electric wires, etc., furnished .015, .02 and .025 inches thick.

J-M Fibroid Asbestos Paper Tape

A thin, fireproof paper about .008 to .01-inch thick, made from specially selected Asbestos fibres. Used for wrapping magnet and armature wires. Put up in rolls from $\frac{3}{8}$ to 3 inches wide, with smooth cut edges. Other widths up to 36 inches specially to order.

J-M Asbestos Yarn

Made of highest grade long-fibre Asbestos. Commercially or absolutely pure, with or without wire. For braiding over wire, incandescent mantles, spark plugs or any other purpose where a heat-resisting or fireproof material is required.

J-M Asbestos Braided and Woven Tubing

Made of pure, long-fibre Asbestos, absolutely fireproof. Largely used for insulating conductor wires of arc lamps and for covering electrical wires where absolute fireproof protection is desired. Cannot burn out and cause short circuiting. Extremely flexible, permanent and durable.



J-M Niagrite Fireproof Cable Insulation



J-M Asphalt Cable Tape



J-M Asbestos Listing



J-M Fibroid Asbestos Paper Tape



J-M Asbestos Yarn



J-M Asbestos Braided and Woven Tubing



"F. Y." Insulation Compound



J-M Electrotherm



J-M Dry Batteries

No. 315 Spark Plug Cement

Of the consistency of thick cream, and grayish-white color. Will pass through a screen of 150 meshes to the inch, permitting it to be used for very fine work. Has strong dielectric qualities and becomes extremely hard at a temperature of 600 degrees Fahr. Not affected by heat up to a temperature of 1,500 degrees Fahr.

No. 316 Dielectric Cement

Put up in powder, mixed with a specially prepared liquid as required. Our standard dielectric cement. Gets extremely hard at 600 degrees Fahr. and will stand a temperature of 2,000 degrees Fahr. Insoluble in water if heated to 550 degrees Fahr. and can be applied up to 3 inches thick.

"F. Y." Insulation Compound

A liquid compound or paint for covering all forms of electrical material, armatures, frames, woodwork, etc. It is inodorous and waterproof. Dries with a black lustre. On smooth, hard surfaces, one gallon will cover about 250 square feet, one coat.

J-M Electrotherm

A soft, flexible pad covered with eiderdown, containing wires insulated with Asbestos. Very light in weight. Better and more convenient than the hot water bottle. Gives a uniform and constant heat. Degree of heat controlled by regulating switch. Attaches to electric-light socket. Invaluable in the home and hospital.

J-M Dry Batteries

This battery is not surpassed by any other make and is backed by the following GUARANTEE:

If J-M Dry Batteries do not prove satisfactory, we will supply new Batteries without cost, or will refund purchase price, including transportation charges.

J-M Fire Extinguishers

We manufacture a complete line of fire extinguishers designed to successfully cope with fires of every character. J-M Extinguishers are approved by the National Board of Underwriters and meet the requirements of all classes of service, including industrial plants, hotels, railroads, theatres, private dwellings, garages, steamships, etc. J-M Responsibility stands back of J-M Fire Extinguishers to see that they give satisfaction in service.



J-M Fire Extinguisher



J-M Success Fire Extinguisher

J-M Success Chemical Fire
EngineManville Dry Powder Fire
Extinguisher

J-M Fire Extinguisher

Approved by National Board of Fire Underwriters. Carries 15 per cent. credit on automobile insurance. Puts out any fire in its incipient stage. Positively extinguishes gasoline, benzine, kerosene and electrical fires. Can be operated by a woman or child. Throws a stream 30 feet with perfect aim. It does not require continuous pumping. The contents can be discharged in cramped quarters where no other extinguisher could be used. Cannot corrode. Every extinguisher is sealed to insure liquid contents being intact. J-M Extinguishing Fluid is non-freezing down to 50 degrees Fahr. below zero and will not injure the most delicate fabric. Bracket for attaching to wall or automobile furnished free.

J-M Success Chemical Fire Extinguisher

Approved by National Board of Fire Underwriters. The most efficient "soda and acid" type machine. Easy and instantaneous in operation. Throws a chemical stream 50 feet and is forty times more effective than water. Has no cocks or valves to corrode, stick and cause trouble. Made of extra heavy cold-rolled copper, in two types, seamless or riveted, and tested to withstand a pressure of 350 pounds to the square inch. Capacity, 3 gallons.

J-M Success Chemical Fire Engine

Approved by National Board of Fire Underwriters. This apparatus is a very efficient substitute for an organized fire department. The discharge is equal in fire-fighting capacity to 1,600 gallons of water. It throws a chemical stream 50 feet. This machine is similar to J-M Success Extinguisher described above but much larger. Being very light and compact it can be quickly moved from place to place by one man.

Manville Dry Powder Extinguisher

A very effective little extinguisher for all kinds of fires, if used promptly when blaze first starts. The chemical compound generates an enormous quantity of carbon dioxide, which absorbs the oxygen in the air, without which no fire can live. We warrant that the powder is non-poisonous, will not injure the most delicate fabric, will not cake or freeze in the tube and will not deteriorate. Length, 22 inches, diameter 2½ inches.

Flooring

Flooring is more than merely something to stand on and walk over. It has a good deal to do with your costs and profits. No matter what your flooring problem may be you cannot afford to treat it lightly. In this connection you will find J-M Flooring Service a genuine help. Architects, Engineers, Railroads and Manufacturing Concerns everywhere are calling on us for flooring advice. The very fact that they do so is proof positive that we are able to give it. Our engineers will be equally glad to confer with you on your flooring requirements. At each of our branches we maintain a staff of expert workmen to apply J-M Floorings, thereby insuring satisfactory results. The satisfactory wear of J-M Floorings is backed by the "make-good" business policy of this company, known as J-M Responsibility.

J-M Mastic Flooring

A practically indestructible flooring made from natural asphalt. Doesn't crack, run or wear into holes. Resilient, therefore easy on the feet and noiseless. Non-slipping. Absolutely sanitary; does not originate or hold dust nor absorb grease, oil or filth. Quickly cleaned by flushing. Proof against most acids. Specially adapted to machine shops, factories, breweries, schools, etc.

J-M Pure Cork Floor Tile

Practically everlasting tile made of cork shavings compressed in individual heated moulds. Outwears a hardwood floor. Resilient and noiseless to the tread. Does not cause foot fatigue. Highly sanitary; non-asorbent; washable with warm water. Very artistic; harmonizes with any interior decoration. Ideal for office buildings, libraries, hospitals, churches, elevator floors, etc.



J-M Mastic Flooring on Express Platform



Installation of
J-M Pure Cork Floor Tile



J-M Water Hose



J-M Steam Hose



J-M Air Hose

Hose

We offer two types of rubber hose—moulded, braided hose, and wrapped duck hose. Both types are made for steam, water, air, garden and other special services.

Moulded braided hose has proven itself generally more durable and efficient than other types, because the plies cannot separate and unwrap in service. Furthermore, sizes up to and including 1½-inch can be furnished in continuous lengths of 500 feet, larger sizes in 50-foot lengths. We offer two brands, J-M Jomanco, a moulded braided hose, and J-M Kearsarge, a wrapped duck hose. Both made by combining best materials obtainable with the highest type of workmanship.

J-M Jomanco Rubber Hose

A moulded-braided hose made of a seamless rubber tube over which is braided one or more circular fabrics of heavy seine twine, as required. A jointless tube of rubber is placed between each fabric and on the outside for a cover. During vulcanization, heavy pressure forces the rubber tubes between the meshes of fabric into an inseparable mass.

J-M Kearsarge Rubber Hose

Made by wrapping cotton duck around a rubber tube or lining, the various plies or wraps of fabric cemented to each other with a high grade rubber cement or friction, and a rubber cover placed on the outside.

J-M Flexible Metallic Combination Air Brake Hose

A high grade, renewable rubber hose protected by an outer armor of interlocking metal spirals. Will not kink, collapse or blow out. Resists a direct end pull of 500 to 1,000 pounds and a crushing strain of 300 to 500 pounds, according to size. Made for standard air-brake couplings. Most economical hose for air signal and air brake connections.

J-M Flexible Metallic Combination Locomotive Tank Hose

Same construction as Air Brake Hose. Made to meet the severe service of locomotive tenders. Metal spirals protect hose from inside pressure and outside damage. Inner tube can be replaced any number of times. Flexible enough for any location or hanging. Cuts down hose expense, time-loss and trouble.

J-M Flexible Metallic Combination Car Heating Hose

Same construction as Air Brake Hose. Remains pressure-tight under all conditions because the heavy armor takes care of the excessive inward pressure encountered in this service, thereby preventing blow-outs and greatly prolonging the life of the rubber. The armor protects it against outside injury.

J-M Locomotive Squirt Hose

Same construction as Air Brake Hose. As it is impossible for this hose to burst, it eliminates the serious and sometimes fatal scalding of firemen and engineers, due to hose bursting or being forced off connections. Saves money because metal armor permits use of lighter and less expensive inner rubber tubes.

J-M Flexible Metallic Combination Boiler Washout Hose

Same construction as Air Brake Hose. Owing to its rugged character this hose is particularly adapted to the hard usage encountered in boiler washout service. Will not kink when pulled around sharp corners. Metal armor outlasts many inner rubber tubes. Latter can be quickly replaced at small cost.



J-M Flexible Metallic Combination Air Brake Hose



J-M Flexible Metallic Combination Locomotive Tank Hose



J-M Flexible Metallic Combination Car Heating Hose



J-M Locomotive Squirt Hose

Household Specialties

The articles listed under this head are practically indispensable in the home and will be appreciated by every housewife. These goods are manufactured in our own factories from the finest long-fibre Asbestos, taken from our own mines in Canada. J-M Household necessities are made not only to sell but to give service. To assure the permanent satisfaction of every J-M customer and to insure full service of every J-M product, this company pledges the whole measure of J-M Responsibility.

J-M Asbestos Table Cover

Positively protects highly polished table tops against hot dishes. It is fireproof—a lighted match or cigar cannot burn through it. Waterproofed by a special process that prevents scalding liquids from injuring the table top. Cannot absorb germ-breeding food stains. Sanitary canton flannel jacket that can be easily removed and washed when necessary. An excellent silencer. Lies flat on the table. Can be folded and put away in sideboard drawer.

J-M Asbestos Table Mats

Identical in construction with the J-M Asbestos Table Cover. These mats are heat-proof, fireproof and liquid-proof. As they do not absorb moisture they are thoroughly sanitary. Will not warp or buckle. Made in round and oval shapes, several sizes.

J-M Asbestos Baking Sheets

Thin sheets of Asbestos paper measuring 9 x 14 inches. For regulating the browning of bread, cakes, roasts, etc. When placed over the article being baked, they may be left in the oven until done, without danger of burning.

J-M Asbestos Stove Mats

Asbestos bound with metal rim, which is fitted with a ring. For use on gas or coal ranges. They prevent scorching or burning of food and utensils and make stirring unnecessary. Round and square, in several thicknesses and sizes.

J-M Asbestos Toaster

A heavy Asbestos mat, backed with sheet steel, covered with a fine wire mesh and fitted with a cold handle. Diffuses the heat over the entire surface, thereby rendering the article equally brown all over.

J-M Asbestos Flat Iron Holder

A soft, heat-resisting pad faced with Asbestos cloth, with lining of hair felt and backed with ticking. Cannot burn. Protects hands from heat of iron, hot dishes, etc.



J-M Asbestos Table Cover



J-M Asbestos Table Mats



J-M Asbestos Stove Mats



J-M Asbestos Toaster



J-M Asbestos Flat Iron Holder



J-M Asbestos Flat Iron Rest



J-M Keystone Range Boiler Cover



J-M Electrotherm

J-M Asbestos Stove Polisher

A wooden brush-back faced with padded Asbestos cloth instead of bristles. The cloth is backed by a soft Asbestos pad. May be used on the hottest stove without burning or unpleasant odor.

J-M Asbestos Flat Iron Rest

A hard slab of Asbestos, measuring $5\frac{1}{2} \times 5\frac{1}{2}$ inches. Being a non-conductor of heat it prevents scorching of the ironing blanket and charring of ironing board. With or without receptacle for wax.

J-M Keystone Range Boiler Cover

Chemically treated cattle hair between two layers of heavy building paper, with an Asbestos lining on boiler side. Covered with canvas jacket provided with hooks. Can be easily and quickly laced on the boiler. Keeps the water in boiler hot for early morning use. Also helps to keep kitchen cool in hot weather.

J-M Electrotherm

A soft, flexible pad covered with eiderdown, containing wires insulated with Asbestos. Very light in weight. Better and more convenient than the hot water bottle. Gives a uniform and constant heat. Degree of heat controlled by regulating switch. Attaches to electric light socket. Invaluable in the home.

Johns-Manville Lighting Service

Johns-Manville Lighting Service places at your disposal the most complete professional and mechanical co-operation available in the lighting field. It offers co-operation in the solution of every conceivable lighting problem.

We present an organization that is equally at your service in San Francisco or in New York; one that is experienced in all departments of illumination; that has an intimate knowledge of architectural problems. Behind this organization lies the ability to produce and install any requisite material.

The broad scope of this service is brought about not only by the experience and skill of our lighting engineers but by our identification of interest with the leading manufacturing organization in the lighting field.

By an arrangement with the Mitchell Vance Company the products of that concern are marketed solely through the Johns-Manville Company. This gives to our clients, in both esthetic and commercial lighting, the benefit of a Service which for over fifty years has figured in the lighting of America's representative buildings. Mitchell Vance lighting fixtures are famous for their substantial character and beauty of design.

As sole selling agents for the celebrated line of Parian ware manufactured by the Gill Brothers Co., we present a line of semi-indirect lighting glassware comprising Moulded, Etched, Standard, Period and special design. There is no medium for the diffusion of artificial light which so satisfies the architect's sense of the artistic and at the same time so thoroughly meets practical lighting requirements.

For Bank, Church, Theatre and highly specialized and localized illumination we offer the Frink and J-M Linolite Systems of lighting. These systems are a combination of the J-M Linolite tubular incandescent lamp and Frink Reflectors of various types. Frink Reflectors for the lighting of store windows and show cases, bank cages, electric switchboards, etc., are scientifically designed to secure proper distribution of light. These reflectors are made by the I. P. Frink Co., for which the Johns-Manville Co. is sole selling agent. They have been favorably known for over half a century.

The centralization of these varied interests in this company affords the means of efficiently planning, designing, making and installing complete lighting equipment that will be a perpetual source of satisfaction.



Show Case Lighted with Frink
and J-M Linolite



J-M Linolite Lamp



Art Gallery Lighted with Frink
and J-M Linolite



Bank Screen Reflector—Frink
and J-M Linolite



Church Ceiling Diffusers
Frink and J-M Linolite



Operating Table Reflector
Frink and J-M Linolite

Frink Reflectors for Case Lighting

Made of heavy metal, lined with special silver-plated ripple glass, insuring an even distribution of light without dead shadows and glaring spots. They produce a powerful yet soft and glareless light that closely approaches daylight. More and better illumination than other systems yet more economical because fewer lights are needed. J-M Linolite or standard base lamps.

J-M Linolite Lamps

Tubular incandescent lamps one inch in diameter and nearly one foot long. Placed end to end in Frink Reflectors they give a continuous "line-of-light," insuring even distribution and high efficiency. Have much longer useful life and are therefore more economical than the ordinary bulb lamp.

Frink Reflectors for Art Gallery Lighting

For years we have studied the difficult art of successfully lighting paintings, singly and in groups, and our skill in this field is demonstrated by the fact that about ninety per cent. of the art galleries in America are illuminated by the Frink and J-M Linolite Systems.

Frink and J-M Linolite Bank Lighting

The perfect diffusion eliminates glare and shadows, and permits working on any part of desk. The source of light being above or below line of vision does not injure the eyes. Fixtures include reflectors for cornice and screen lighting; reflectors for lighting double and single desks, filing cabinets, adding machine tables, etc.

Frink Ceiling Diffusers for Church Lighting

This method of church illumination adds to the beauty of a church by bringing out the architectural details. By giving a perfect distribution of soft, mellow light it also makes reading easy for all. We will gladly offer suggestions on church lighting problems. We have planned and installed the illumination of over 25,000 churches.

Frink Reflectors and Fixtures for Hospital Lighting

The Frink Dustless Ward Reflector throws the light on the ceiling, which diffuses it over the entire ward. Absolutely no glare in the eyes of patients.

The Frink Operating Table Reflector throws a powerful light on the patient but protects the surgeon's head against heat by an ingenious system of ventilation.

Frink Reflectors for Memorial Windows and Glass Ceilings

The most delicately tinted glass illuminated without spots or shadows. True colors retained. Sunlight and moonlight window effects produced.

Frink and J-M Linolite Restaurant Lighting

Here, as in the case of church lighting, great skill is required in order to bring out interior decorative effects to best advantage. The subdued and evenly diffused light produced by this system shows architectural details in all their richness and beauty, and lends an added air of luxury to decorations and furnishings.

Frink and J-M Linolite Store Lighting

The ample flood of diffused light produced by this system adds to the cheerful atmosphere of a store, thereby becoming an important factor in creating customers. By rendering absolutely true color values this method of lighting also shows off interior decorations to best advantage and makes it easy for customers to select and match fabrics. More than 30,000 stores are lighted with the Frink and J-M Linolite Systems.

Frink and J-M Linolite Store Window and Show Case Lighting

Owing to their scientific design, Frink Reflectors direct the light on the goods, not on the street outside of the window, nor on the aisle floor. Merchandise lighted by these reflectors is shown in finest detail and color values, yet there is no glare. All lamps are concealed.

Frink and J-M Linolite Theatre Lighting

We are fully prepared to meet the special conditions called for by this class of illumination. Our lighting Engineers and Designers co-operate with Architects from the time rough plans are drawn, producing beautiful special effects to harmonize with the scheme of decoration. We also furnish Frink Reflectors for borders, footlights and special effects.

Frink and J-M Linolite Illumination for Armories, Billiard Parlors, Bowling Alleys, Gymnasiums and Squash Courts

The special requirements demanded by these installations are more satisfactorily and more economically met by the Frink and J-M Linolite Systems of lighting than by any other on the market.



Restaurant Lighted with Frink
and J-M Linolite



Store Lighted with Frink and
J-M Linolite



Show Window Lighted with
Frink and J-M Linolite



Theatre Lighted with Frink and
J-M Linolite



Billiard Parlor Lighted with
Frink and J-M Linolite



Frink Carriage Call



Frink Portable Lamp Guard



Parian Ware



Frink Polaralite Hanging Sign

J-M Lighting Fixtures

This line of standard fixtures is so comprehensive in scope and broad in individual treatment that it adapts itself readily to practically any scheme of decoration. It includes inverted reflectors of the indirect and semi-indirect types in brass, bronze, plain metal and Parian ware, lined with reflectors of imported ripple glass, eliminating glaring spots of light directly above the fixture. Also wall lights, ceiling lights, etc.

Frink Carriage Call

For day and night service; extensively used by department stores and theatres. Exit signs for theatres, stores, etc. Elevator signs. Railroad signs for ticket office, baggage room, etc.

Incandescent Lamps

Carbon, metallized, tantalum and tungsten, in three styles; large, street series and miniature; in regular, round and tubular form, etc. Clear glass, frosted, superficially colored and naturally colored.

Frink Portable Lamp Guard

The Frink Lamp Guard is made of Bessemer steel, plated by a special process that prevents rust and will not crack or peel off. While it is the strongest lamp guard on the market, the ribs are so arranged that the obstruction of light is reduced to a minimum. It is easy to maintain and has no springs or clamps to get out of order or work loose by vibration. There is no strain on terminals of sockets. Includes $\frac{1}{2}$ -inch base waterproof socket with reinforced set screw.

Locks and unlocks by one turn of the handle.

Parian Ware

The effect of the light produced by this beautiful glassware, which closely resembles the famous Parian marble, is best described by the phrase "sunlight without glare."

Parian Ware offers a wide scope for the perfect illumination of stores, offices, churches, auditoriums, public buildings, residences, etc. As it comes in a variety of designs, such as Louis XV, Elizabethan, Empire and Grecian, it harmonizes perfectly with period furnishings.

Frink Polaralite Sign

An effective medium for high class showcase, counter and window advertising. Used for elevator signs, aisle and stairway markers in department stores, and signs for bank windows, doctors' offices, dentists' offices, florists' windows, barber shops, etc. It consists of a sheet of heavy plate glass mounted on a substantial nicked base. The lettering, together with a trademark or design, is etched in the glass and may be tinted if desired. A concealed J-M Linolite Lamp in base brings out the lettering and design in bold and pleasing relief.

LAUNDRY SPECIALTIES

Johns-Manville Service to Laundries is maintained to assist you in the solution of any and every problem of laundry construction, equipment and operation in which the nature of J-M products and the range and diversity of J-M experience indicate possibility of useful service to you.

J-M Service will advise you what J-M products to use and how to use them. J-M Responsibility will see that J-M products give you Service in the fullest sense of the term.

J-M Laundry Felt

Selected hair reinforced through center with a layer of cheese cloth, a patented feature that prolongs the life of the felt. Less than half the price of wool felt, lasts longer and gives a better finish, owing to its resilient and non-absorbent qualities. Absolutely sanitary. Will not stain clothes.

J-M Asbestos Laundry Blanket

A heat-insulating blanket of pure Asbestos which, when run between the rolls and steam chest at night, absolutely prevents the padding from being scorched. Also keeps rolls warm over night, making it easier to heat them when starting; a saving of time and money. In standard widths, any length desired.

J-M Transite Asbestos Wood for Starchboards and Sorting Tables

A practically indestructible substitute for wood, composed of Asbestos fibres and hydraulic cements. Takes a high polish, and will not split or splinter. Non-absorbent; hot starch will not stick to it. Unlike marble, it does not chip. Outlasts zinc many times and has no sharp corners to tear clothes. Easily cleaned and absolutely sanitary.

PAINTS

These products are composed of the highest quality materials obtainable and by reason of their long life represent an actual economy over similar products offered at lower prices.

J-M Boiler Front Coating

A high grade paint for boiler fronts that gives unusually satisfactory service. Withstands high heat, protects the iron surface from rust and has an attractive black finish.



J-M Laundry Felt



J-M Transite Asbestos Wood Starchboards



J-M Boiler Front Coating



J-M Cold Water Paint



J-M Iron Preservative



J-M Regal Roof Coating



J-M Stack Preservative

J-M Fireproof Cold Water Paint

A fire retardant, durable, sanitary paint at one-sixth the cost of oil paint. Specially suitable for factories, farm buildings, warehouses, mines, etc. For inside and outside use, in white and many colors. J-M Inside White for factories increases the efficiency of employes and cuts lighting bills 40 to 75 per cent.

J-M Spraying Machine

A very efficient machine for applying J-M Cold Water Paint quickly to large surfaces, operated by any power or by hand.

J-M Iron Preservative

A dense asphalt compound for protecting structural metal work, iron, fences, etc. Gives a fine black finish and forms a thick coating that is not affected by acids, gases or climatic changes. Prevents rust formation, thereby increasing the life of the iron.

J-M Regal Roof Coating

An asphalt compound that prolongs the life of Regal and other "rubber" type roofings. (For description; see page 23.)

J-M Stack Preservative

A dense asphalt compound for preserving the life of smoke stacks. When properly applied forms a heavy bituminous film which bakes on the stack, forming a double protection against high heat, gas and weather.

J-M Pipe Insulation Service

The difference between mere "pipe covering" and J-M Heat Insulation is often several thousand dollars a year in the plant owner's pocket.

This is due to the fact that J-M Insulations exactly meet the thermal requirements of your plant. We make a close study of your conditions—the length of the pipe line, the steam pressure carried, the nature of the fittings, the external temperature, as well as the many other factors that enter into such problems.

We go a step further than selling you pipe-insulating materials—we co-operate with you intelligently in planning your installation. We are also equipped to install our materials in the most approved manner. The convenience of getting the proper insulating materials from one concern and having them applied by the same concern is self-evident.

When you use Johns-Manville Pipe-Insulation Service you are availing yourself of years of experience in this work, and the unbiased judgment of specialists whose business is pipe insulation.

There is a further assurance of satisfaction in any transaction with the Johns-Manville Co. This great nation-wide organization, with a reputation for fair dealing extending over a period of 50 years, insists that you, the purchaser and user of its products, must be satisfied.

J-M Service gives you the right product. J-M Responsibility is our word of honor that it will *stay* right.



J-M Asbesto-Sponge Felted
Pipe Covering



J-M Asbestos Fire Felt Pipe
Covering



J-M 85% Magnesia Pipe
Covering



Vitribestos Pipe Covering



J-M Safety Blow-Off Pipe
Covering



J-M Asbestos Hair Felt Pipe
Covering

HIGH PRESSURE PIPE COVERINGS

J-M Asbesto-Sponge Felted Pipe Covering

Composed of many layers of felt made of Asbestos fibre and finely ground sponge. This construction results in a large number of "dead air" cells, thus securing maximum insulating efficiency. Most efficient and economical covering for superheated and high pressure steam pipes. Can be removed and replaced any number of times without deterioration.

J-M Asbestos Fire Felt Pipe Covering

Pure Asbestos fibre loosely felted together, combining a large number of "dead air" cells. This insulation is extremely durable and is absolutely unaffected by vibration, expansion and contraction. It is also fireproof.

Eighty-Five Per Cent. Magnesia Pipe Covering

A light and highly efficient insulation for high pressure steam pipes. Combines the high non-conducting qualities of Carbonate of Magnesia and Asbestos fibre.

Vitribestos Pipe Covering

An Asbestos air-cell covering vitrified under our patent process. It possesses high insulating value and fireproof qualities, and is extremely strong.

J-M Safety Blow-Off Pipe Covering

Protects blow-off pipes against corrosion by hot gases and minimizes explosions due to sudden changes of temperature. Recommended by Boiler Insurance and Casualty Companies throughout the country.

J-M Asbestos Hair Felt

This felt is composed of pure Asbestos Fibre and long staple Cattle Hair. It forms a desirable covering for steam pipes and boilers, for mining purposes, etc. It is very elastic, and owing to the large proportion of asbestos, is not liable to injury from steam heat.

MEDIUM AND LOW PRESSURE PIPE COVERINGS

J-M Asbestocel Pipe Covering

Built on the arch principle with channels running around the pipe instead of lengthwise, thereby preventing the circulation of air. Will not crush down, and successfully withstands hard usage and vibration. Most efficient covering for medium steam pressure and heating pipes.

J-M Air-Cell Sectional Pipe Covering

Corrugated Asbestos paper with the channels running lengthwise. A light cellular covering that forms a satisfactory insulation. For medium and low pressure steam and hot water pipes.

J-M Molded Asbestos Pipe Covering

A composition of Asbestos fibre and other fireproof insulating material. J-M Molded Asbestos satisfactorily meets the demand for a low-priced covering for medium and low pressure steam pipes.

LOW PRESSURE STEAM OR HOT WATER PIPE COVERINGS

J-M Wool Felt Pipe Covering

Composed of wool felt lined with Asbestos paper. An inexpensive and efficient covering for low pressure steam and hot water pipes. Made in three styles to meet various requirements.

J-M Wool Cell Pipe Covering

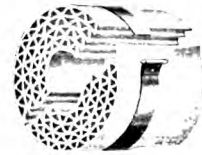
A light cellular covering composed of alternate layers of wool felt and Asbestos paper over an Asbestos paper lining. For low pressure steam and hot water pipes.

J-M Eureka Pipe Covering

Consists of an inner section of Asbestos felt surrounded by alternate layers of Asbestos and wool felt. A durable and satisfactory insulation for low pressure steam and hot water service.



J-M Asbestocel Pipe Covering



J-M Air-Cell Pipe Covering



J-M Molded Asbestos Pipe Covering



J-M Wool Felt Pipe Covering



J-M Wool Cell Pipe Covering



J-M Eureka Pipe Covering

Generated at University of Michigan on 2023-02-01 07:27 GMT / https://hdl.handle.net/2027/uiug.301120069211958
Public Domain, Google-digitized / http://www.hathitrust.org/access_use#pd-google



J-M Asbestocel Corrugated
Fireproof Paper



J-M Asbestos Roll Fire Felt



J-M Non-Burn Asbestos Felt
and Roll Board



J-M Anti-Sweat Pipe Covering



J-M Keystone Plumbing Pipe
Covering



J-M Frost Proof Pipe Covering

HOT AIR FURNACE PIPE COVERINGS

J-M Asbestocel Corrugated Fireproof Paper

Corrugated Asbestos Paper held together by an Asbestos backing. For covering heaters, heater pipes, etc. The large amount of "dead air" confined saves fuel by preventing loss of heat. Eliminates the danger of fire from overheated furnaces and pipes, and prevents pipes from rusting. Also furnished in the form of Asbestocel Blankets, ready to apply to furnace.

J-M Asbestos Roll Fire Felt

Made of long staple Asbestos. Absolutely fireproof, and an efficient insulator against heat and cold. For covering heaters and heater pipes in cellars to prevent heat from escaping and to prevent fire from overheated pipes. Also for use between shell and brick setting of water tube boilers, to take up expansion and contraction.

J-M Non-Burn Asbestos Felt and Roll Board

A fireproof material for covering heater pipes, lining side walls, floors, wood partitions, etc. Will not disintegrate. Odorless and vermin-proof.

COLD WATER, BRINE AND AMMONIA PIPE COVERINGS

J-M Anti-Sweat Pipe Covering

Alternate layers of waterproof insulating paper and wool felt stitched together and held in shape without glue. Prevents condensation on cold water pipes, thereby eliminating risk of damage to merchandise in stores and draperies, carpets, etc., in hotels and dwellings.

J-M Keystone Plumbing Pipe Covering

Chemically treated cattle hair stitched between two layers of strong non-porous paper, with canvas jacket. Can be applied where space does not permit use of sectional covering. Easily attached by lacing. Also furnished with Asbestos lining for hot water pipes.

J-M Frost-Proof Pipe Covering

A combination of plain and saturated felts for insulating drinking water lines in buildings and large industrial plants. Very efficient and economical. Also prevents freezing where temperature is not too low.

J-M Zero Pipe Covering

A combination of hair and wool insulating felts for protecting cold water pipes from freezing. For outdoor service or where pipes are subjected to extremely low temperatures we recommend two layers of Zero finished with J-M Weatherproof Asbestos Roofing Jacket.

J-M Standard Brine and Ammonia Pipe Covering

Alternate layers of Roofing Felt or Parchment Paper and Wool Felt Paper. An efficient insulation for brine and ammonia pipes and cold lines running through heated rooms.

PIPE COVERING ACCESSORIES

J-M Removable Pipe Covering Flanges

These flange coverings make it possible to prevent heat radiation from flanges and at the same time to quickly remove and re-apply the coverings. We furnish sectional removable flange coverings of Magnesia, J-M Fire Felt and J-M Vitribestos. Also all our standard forms of block coverings with wire and cement for constructing non-removable flange coverings.

J-M Standard Asbestos Weatherproof Jacket

This jacket is intended for use where exposed pipes are subjected to severe weather conditions and hard usage. When properly applied with J-M Ajax Cement it prolongs the life of the covering and increases its efficiency. Complete with cement and wire for fastening.

J-M Asbestos Acid-Proof Jacket

An acid-proof and waterproof felt made of Asbestos to fit over sectional coverings as a protection against acid and moisture. Complete with Waterproof Composition to seal the laps.

J-M Lacing Jackets

Made of heavy duck with hooks and lacing cord (wire if preferred) and are an easily applied substitute for sewed-on canvas jackets. They do not require skilled labor to apply; can be readily removed and re-applied without injury, and may be painted with J-M Cold Water Paint or oil paint.



J-M Zero Pipe Covering



J-M Standard Brine and Ammonia Pipe Covering



J-M Removable Pipe Covering Flanges



J-M Lacing Jackets



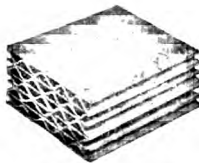
J-M Asbestos Fire Felt Sheets



J-M Asbestos-Sponge Felted Sheets



J-M Eighty-five per cent. Magnesia Sheets and Blocks



J-M Vitribestos Sheets



J-M Asbestocel Sheets and Blocks

J-M Pipe Covering Accessories

For applying J-M Pipe coverings we recommend the following: Solid Brass and Brass Lacquered Bands for holding pipe coverings in place; Cold Water Paste for sealing the canvas laps on pipe coverings; Jute Wrapping Twine for wrapping hair felt, etc.; Cotton Sewing Twine for sewing canvas pipe covering, etc.

INSULATING SHEET BLOCKS AND FELTS FOR HIGH PRESSURE STEAM

J-M Asbestos Fire Felt Sheets

Composed of pure Asbestos fibre loosely felted together forming a large number of small air cells. For covering boilers, drums, flues, heaters, etc. Absolutely fireproof and is unaffected by exposure to the weather, expansion and contraction or vibration. Does not settle or powder. May be removed and replaced without injury.

J-M Asbestos-Sponge Felted Sheets

Composed of Asbestos fibre and finely ground sponge, forming an extremely cellular fabric. Made up in laminated form, like the leaves of a book, it confines a maximum number of "dead air" cells, thereby insuring greatest insulating efficiency. For high pressure steam surfaces. Tough and flexible; can be removed and replaced any number of times without deterioration.

J-M Eighty-Five Per Cent. Magnesia Sheets and Blocks

These blocks combine the high non-conducting qualities of carbonate of magnesia and Asbestos fibre. A light and highly efficient insulator for boilers, domes, cylinders, etc.

J-M Vitribestos Sheets

A vitrified Asbestos product of air-cell construction. Possesses high insulating value and fireproof qualities, together with great strength. Can be furnished flat, or in sheets curved to radius.

J-M Asbestocel Sheets and Blocks

Built up of successive layers of corrugated Asbestos fibre paper. Withstands vibration and hard usage. In any thickness desired. For all classes of heat-resisting and heat-retaining, such as boilers, flues, breechings, shaftings, ceilings, etc.

J-M Air Cell Sheets and Blocks

Made of corrugated Asbestos paper, forming a light cellular covering that affords satisfactory insulation for medium pressure steam, heating boilers, etc.

J-M Molded Asbestos Sheets and Blocks

A composition of Asbestos fibre and other fireproof insulating material. Satisfactorily meets the demand for a low-priced covering for medium pressure steam, heating boilers, etc.

V-Rib Lath and Boiler Covering Accessories

Air Space Studs, used in connection with mesh wire to obtain the necessary air space between the heated surface and insulating material. Hexagonal Wire, bound on the boiler, offers a surface to which Asbestos Cement will readily adhere. Galvanized Wire for binding blocks and sheets on boilers and heated surfaces. Lagging Hooks, used in connection with galvanized wire for holding sheets and blocks on boilers.

J-M Asbestos Sheet Mill Board

Made from pure Asbestos fibre. Specially adapted for fireproof linings of floors, partitions, ceilings, elevator shafts, etc. Also for packings, fire screens, lining for ranges, stoves, grates, gas backs, etc. Fireproof and acid-proof.

J-M Vitribestos Ceiling Insulation

Composed of the same material as J-M Vitribestos Boiler Insulation. Its high insulating qualities and strength make it the ideal material for insulating the walls and ceilings of engine rooms, boiler rooms, etc., against the radiation of heat.

J-M Vitribestos Stack Lining

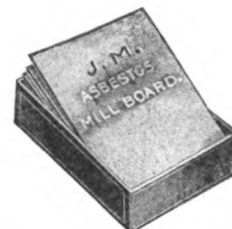
A protection for steel smoke stacks against fire, dampness, gases and fumes, and sulphurous and other gases of combustion. Weighs only one-tenth as much as other stack linings, thereby permitting lighter stack construction. Being thinner than other stack linings it allows a reduction in diameter of stack and also lighter foundations, all of which result in big savings.

J-M Vitribestos for Ducts and Flues

This material, owing to its fireproof qualities and great strength, is particularly valuable for covering hot-air ducts and flues to prevent radiation and the ignition of surrounding woodwork. J-M Vitribestos Sheets form a durable flue for hot gases, chemical fumes, etc.



J-M Air Cell Sheets and Blocks



J-M Asbestos Sheet Mill Board



J-M Vitribestos Ceiling Insulation



J-M Vitribestos Stack Lining



J-M Vitribestos for Ducts and Flues

Packings

The development of J-M Packing Service has followed along the logical lines of eliminating as far as possible the usual long list of specialized packings differing only in minor non-essentials. In place of this we offer a limited list of standardized products calculated to render maximum service under all practical conditions.

By adopting this system, the power user will find that he has materially reduced his packing costs without the slightest loss of efficiency.

The old costly and wasteful system of using a separate type of packing for almost every different kind of joint had nothing to recommend it. It meant the carrying in stock of very many kinds which were only rarely if ever called for, which had at best a limited use and could just as readily have been replaced by another and very slightly dissimilar brand.

The J-M Packings listed herein are the practical product of a house which has given many years' study to the production of goods which shall be of real service.

In this list will be found suitable packings for every variety of purpose which can be demonstrated by the most exacting user.

ROD, PLUNGER AND VALVE STEM PACKINGS

J-M Sea Rings

Designed and built to pack efficiently, by working automatically all rods, shafts and outside packed plungers, and to provide one packing only for all steam, air and hydraulic conditions.

This packing only acts or presses against the rod when necessary. Pressure or tendency of leakage through the stuffing box acts on the lip of the packing and holds it against the rod in exactly the same proportion as the pressure on the packing.

J-M Kearsarge Packing

One packing for all steam and air piston rods and valve stems. A center of flattened woven asbestos tubes cemented together and to a rubber expansion back, giving maximum resiliency and providing a reservoir for a preserving liquor that keeps the packing soft and flexible in service. Provided with a closely woven asbestos cover that forms an ideal and durable wearing surface.

J-M Duplex Hydraulic Rod and Plunger Packing

For rods and outside packed plungers working against hot or cold water. The flax fabric which forms the body or wearing surface is wrapped around a rubber core. The layers are cemented together and to this core with a thin layer of rubber that gives resiliency and acts as a waterproof wall between each layer of braided flax fabric. Flax in fabric form is much stronger, giving a more durable wearing surface than the braided construction usually offered.

J-M Universal Ammonia Packing

For this service we have combined rubber, cotton and asbestos in such a manner as to satisfactorily care for the extreme temperatures encountered, and to withstand wear for the greatest length of time.

J-M Universal Steam Hammer Packing

Particularly adapted for this service on account of its extreme resiliency. A combination of asbestos and cotton fabrics with a special rubber compound, which wears especially well under such conditions.

J-M Mogul Coil Packing

Where packing space is less than $\frac{3}{8}$ -inch, we recommend the use of J-M Mogul Valve Stem Packing, which is made of long-fibred asbestos, twisted or braided, according to which style of packing is desired.



J-M Sea Rings



J-M Kearsarge Packing



J-M Duplex Hydraulic Rod and Plunger Packing



J-M Universal Steam Hammer Packing



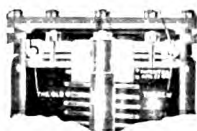
J-M Mogul Coil Packing



J-M Universal Piston Packing



J-M Kearsarge Throttle Valve Packing



J-M Air Brake Cylinder Packing Expander Ring

J-M PISTON PACKINGS (For Packing inside-packed pumps)

J-M Universal Piston Packings

The side-swiping action that inside piston packing is subjected to by the walls of the cylinder has led us to produce a folded and molded packing, the layers of which cannot separate, because each one is a continuation and part of the adjoining one. A durable and hard wearing combination of cotton, asbestos and rubber.

Other J-M Rod, Plunger and Piston Packings

While the demand for old style cotton, flax, rubber and asbestos packings is steadily decreasing, we still continue to supply when desired and to devote as much care to their manufacture as hitherto.

J-M Vulcabeston Mallet Quality Packing

A special hard and dense Vulcabeston product, made for receiver pipe, slip and ball joints on Mallet locomotives. The only packing found to satisfactorily take care of these extremely hard conditions.

Special Ragonnet Reverse Gear Piston Packing

This packing consists of three $\frac{5}{8}$ -inch square rings of Vulcabeston Mallet quality packing described above. It overcomes all the trouble experienced with the ground cast-iron rings used in the past, making the Gear Piston tight and preventing leakage of any kind.

J-M Kearsarge Throttle Valve Packing

Made from the finest quality long-fibre Asbestos fabric and rubber compound, scientifically lubricated to insure longest and most economical service. Does not become hard in the stuffing box, and positively will not burn or blow out under the highest pressure.

J-M Air Brake Cylinder Packing Expander Ring

An unbreakable steel ring with a flat instead of a round bearing surface. By pressing a larger surface of leather against the walls of the cylinder it makes leakage practically impossible, thereby preventing brake failure and giving maximum braking efficiency. The larger bearing surface also reduces wear, increasing the life of the leather at least threefold.

SHEET PACKINGS

J-M Permanite

Permanite gaskets will make tight joints against superheated or saturated steam, hot or cold water, air, acidulated and alkali solutions and extreme heat, such as the exhaust from automobile engines. Extremely light in weight and need only be used in thicknesses about one-half of those necessary in rubber and softer sheets. Does not deteriorate in years.

J-M Seigelite

A fibrous packing that has the peculiar quality of becoming tougher as it is subjected to the action of oil, grease, gasoline and water. Especially economical for use in making gaskets for the above conditions, as it is sold by the square yard at a price that makes its actual cost compare favorably with cloth insertion and low priced rubber sheet.

Other J-M Sheet Packings

While we continue to manufacture asbestos fabric, fibre, rubber and rubber and cloth sheets of various styles for those who insist upon these types of packing, we recommend the use of J-M Permanite and J-M Seigelite, as the quality and construction of these sheets make them absolutely suitable for all conditions.

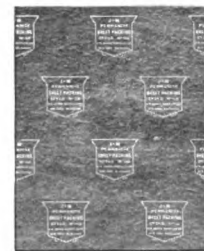
GASKETS AND GASKETING

J-M Kearsarge Manhole and Handhole Boiler Plate Gaskets

Softer and more resilient than those required for packing flat, smooth joints. Made by impregnating a closely woven asbestos-metallic fabric with a heat-resisting cement, cut and folded into a gasket of proper shape and size. Exceptionally strong, and light in weight, and if properly applied may be used over and over again.

J-M Kearsarge Tubular Gasketing for Emergency Purposes

A closely woven asbestos-metallic fabric. Comes in 12-foot coils. Has round cross section and hollow center. By cutting proper lengths from these coils and joining the ends together with lead tubing furnished, the engineer can make his own manhole and handhole gaskets when necessity demands.



J-M Permanite Sheet Packing



J-M Seigelite Sheet Packing



J-M Kearsarge Boiler Plate Gasket



J-M Kearsarge Tubular Gasket



Vulcabeston Pump Valves



J-M Rubber Pump Valves

PUMP VALVES

Vulcabeston Pump Valves

Vulcabeston pump valves, made by combining the longest asbestos fibre obtainable, with the best quality of Para rubber, are very hard, but extremely tough and resilient, and are suitable for any service.

The extreme toughness of these valves make them very much more durable than those made of rubber and other compounds.

J-M Rubber Pump Valves

We manufacture rubber valves of various densities and gravities for all hot and cold water and condenser conditions.

Manufacturers' Packings

We furnish our standard packings or will make specially designed packings to meet various conditions in connection with the manufacture and assembling of any product, such as valves, automobile parts, hydraulic machinery, oil and gas machinery, cold storage machinery, etc.

Brake and Friction Lining, Blocks and Discs

For machinery equipped with brakes or clutches.

The severe conditions that brakes and clutches are frequently subjected to have necessitated the production of materials with qualifications more suitable than those used in the past, for want of something better.

Asbestos—a mineral not affected by water, oil or heat, and which possesses a high coefficient of friction, is the logical material to use in the construction of brakes and friction linings.

Experience, combined with a careful study and observation, is responsible for two distinct types of brake and clutch material—J-M Brake Band Lining and J-M Brake Blocks.

J-M Brake Band Lining is generally used where a thin, pliable continuous lining or disc is required.

J-M Brake Blocks are generally used in place of wood or metal blocks and discs and are recommended for most severe conditions encountered.

J-M Brake Band Lining

Made from asbestos spun into yarn with brass wire, and woven or braided into a fabric of proper width and thickness. The finished fabric treated with a heat resisting and water-proofing compound.

J-M Brake Blocks

A homogeneous mass composed of asbestos fibre, brass wire and a binding compound, moulded and vulcanized under enormous pressure into blocks or discs of suitable dimensions.

A high coefficient of friction and the ability of this moulded material to resist wear makes it the most efficient and economical brake or friction lining obtainable.

Machines equipped with J-M Brake Blocks will operate more efficiently and with greater ease, because brakes or frictions will grip with less effort required when other materials are used.



J-M Non-Burn Brake Band Lining



J-M Brake Blocks

Theatre Accessories

Johns-Manville Service to Theatres has but one idea in mind—the safeguarding of life and property through products that prevent the spread of fire. We will be glad to extend this service to you in the form of authoritative advice as to the best means of safeguarding your audiences and property.

For many years we have made an intelligent and thorough study of the problems in connection with Asbestos Theatre Curtains and Moving Picture Machine Booths. The products described below are the result of this experience combined with the determination to produce materials of the very highest standards only. The fact that a large majority of the best theatres and moving picture houses have adopted these products affords ample proof of their quality and reliability.

J-M Asbestos Theatre Curtains

Made of Asbestos Cloth, an absolutely fireproof fabric woven from the long, tough fibres of Asbestos rock. Substantially constructed, with broad lap-seams and hems at sides, and sewed with Asbestos twine. Furnished with or without brass wire reinforcement, in pure or commercially pure cloths.

J-M Vitribestos Theatre Curtain

A structural steel frame covered on the stage side with fireproof sheets of J-M Vitribestos (vitrified asbestos). Next to the audience is a sheet of steel, and in the center is a "dead air" space. This form of construction insures a rigid fireproof wall that makes an absolute barrier against flame and draft.

J-M Asbestos Portable Moving Picture Machine Booth

Consists of a strong, light and absolutely fireproof Asbestos fabric over a stout, iron pipe frame. Specially designed socket frames cannot get out of order. Asbestos fabric folds into a compact bundle. Entire booth can be set up or packed for shipment in twenty to thirty minutes. Approved by National Board of Fire Underwriters.

J-M Transite Asbestos Wood Semi-Portable Booths for Moving Picture Machines

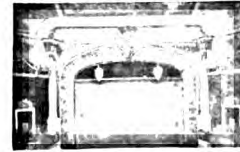
Made of panels of Transite Asbestos Wood. A practically indestructible fireproof booth. These panels, which are framed with angle iron, are interchangeable and easily bolted together without fitting or drilling. Can be put together or taken down in less than two hours. Approved by National Board of Fire Underwriters. Conforms to all state and city regulations.

J-M Transite Asbestos Wood Permanent Booths for Moving Picture Machines

Made of sheets of Transite Asbestos Wood. A practically indestructible, fireproof booth. Sheets permanently bolted to structural steel framework. Door and window shutters close automatically. Ventilating system on special order.

J-M Antignite

A solution for fireproofing scenery, canvas, cotton goods and any inflammable textile used in close proximity to heat.



J-M Asbestos and Vitribestos Theatre Curtain



J-M Asbestos Portable Moving Picture Machine Booth



J-M Asbestos Wood Semi-Portable Moving Picture Machine Booth



J-M Asbestos Wood Permanent Moving Picture Machine Booth

Waterproofing and Mastic Materials

Although we manufacture waterproofing materials our prestige in this field does not depend upon the quality of the materials alone but also upon our recognized ability as Waterproofing Engineers. Our Engineering Department is composed of experts who have successfully planned and executed some of the biggest and most difficult waterproofing undertakings on record, including bridges, reservoirs, abutments and the foundation works of railroad terminals, skyscrapers, etc.

At each of our branches, under the supervision of our Engineering Department, we maintain a force of workmen skilled in the application of J-M Waterproofing Materials. Thus, J-M Service does the manual labor as well as the "hard work" on waterproofing jobs, large or small. To place your waterproofing problem in our hands for solution is to place it beyond risk of failure. J-M Responsibility, the guiding principle of this great business, safeguards you against the troubles which develop as the result of inadequate, slipshod, unscientific waterproofing practice.

J-M Waterproofing Materials are based on Gilsonite, the purest, most durable and most efficient substance known for waterproofing work. Our special treatment renders Gilsonite into a material possessing remarkable ductility and adhesive properties, particularly adapted to withstand the exacting conditions to which it is subjected.

J-M Asphalt Waterproofing Cement

Owing to the great care exercised during the process of manufacture this bituminous material is absolutely uniform in character. It is 99.5 per cent. pure and contains no organic, vegetable or other matter that will disintegrate or decay. Proof against the action of acid, alkali, brine and water. Very slightly effected by a wide range of temperature.

J-M Asphalt Saturated Fabric

An especially strong fabric impregnated with waterproofing cement, used in building up a waterproof membrane in as many plies as required. Due to the open-mesh character of this material, the hot waterproofing cement saturates and binds together the several plies, making a membrane of great strength and elasticity.

J-M Waterproofing Asbestos Felt

Consists of a felt made up of pure Asbestos fibre impregnated with pure asphalt. This is the only all-mineral felt made, therefore the only one that is proof against water, acid, mould and decay for all time. Virtually a plastic bituminized stone sheet. The best waterproofing felt for permanent work.

J-M Concrete Primer

Applied to concrete, stone or brick, this material forms an anchorage for subsequent waterproofing. Prevents moisture coming to the surface when time cannot be allowed for the concrete to thoroughly dry out.

J-M Liquid Waterproofing Coating

This material, applied to the outside face of concrete walls positively withstands seepage from surface water, thereby preventing discoloration. Used in connection with J-M Concrete Primer, and applied cold in one or two coats to meet conditions.

J-M Cut Stone Backing

For coating the sides and back of cut stone to prevent discoloration and dampness of inside walls. The consistency of this material permits of easy brushing.

J-M Aquadam

To be applied over brick, stone, tile and concrete surfaces where it is desired to damp-proof the walls and provide a plaster finish. Cheaper and easier to apply than furring and lathing. Makes a perfect bond between it and the plaster when properly used.

J-M Asphalt Filler

For filling the joints between brick and stone street pavements, concrete roadways, reservoirs, swimming pools, etc. This material is not affected by a wide range of temperature, therefore it is pliable in cold weather and at the same time will not melt and ooze out in warm weather. Owing to its mineral character will not rot or disintegrate.

J-M Mineral Rubber

An asphalt compound used in connection with rubber in the manufacture of shoes, belting, automobile tubes and tires, rubber bands, rubber clothing, etc. This product is superior to ordinary mineral rubber because of its greater adhesiveness and ductility.

J-M Concrete Floor Preservative

A chemical solution which combines with the cement of concrete floors, forming a hard, insoluble surface. Adds to the life of the floors, and by arresting the progress of disintegration prevents the formation of "concrete dust" which is so injurious to stock, machinery and operatives.

Sanitary Plumbing Specialties

The J-M line of Sanitary Specialties comprises practically every plumbing fixture necessary for any type of installation or building.

The handling of fixture contracts of this nature conforms consistently to the policy of J-M Service, because each fixture is selected and produced to serve a particular purpose. In this way the requirements of design and service can be met most efficiently and economically.

Special information will be furnished on waterclosets, baths, lavatories, urinals, sinks, drinking fountains, showers, shower-bath mixing valves, washerless faucets, cast-iron closet fittings and similar material.

Our New York Branch will be glad to go over your plans and cooperate with you in planning special installations complete for the furnishing of Sanitary Plumbing fixtures.

MATERIAL	PAGE	MATERIAL	PAGE
C			
Carburetor, Carter.....	17	Extinguisher, J-M Fire.....	20-44
Cable Insulation, Niagrite, Fireproof.....	41	Extinguisher, Success, Chemical Fire.....	44
Cable Tape, Asphalt.....	41	Extinguisher, Manville Dry Powder.....	44
Case Lighting, Frink Reflectors for.....	52	Expander Ring, Air-Brake Cylinder Packing.....	66
Carriage Call, Frink.....	54	F	
Carter Carburetor.....	17	Fabric, Asphalt, Saturated.....	73
Carter Gravity Tank.....	16	Feed Wire Insulator.....	38
Cement, Auto Patching, Narco.....	20	F-Y Insulation Compound.....	42
Cement, Asbestos Motor.....	20	Felt, Roofing and Insulating.....	24-44
Cement, Asphalt.....	23-32	Felt, Asbestos Slaters'.....	24
Cement, Asbestos Retort.....	29	Felt and Roll Board Asbestos.....	24
Cement, Asbestos Furnace.....	30	Felt, Wool Deadening.....	26
Cement, Arido Dry Furnace.....	30	Felt, Laundry.....	55
Cement, Asbestos Fire-Felt.....	30	Felt and Roll Board, Non-Burn Asbestos.....	60
Cement, Asbestos Hot Blast.....	31	Ferro Compound.....	32
Cement, Asbestos Motor.....	31	Ferrotite Compound.....	32
Cement, Acid-Proof.....	31	Fibre Asbestos.....	12
Cement, Asphalt Waterproofing.....	73	Fibre, Conduit.....	40
Cement, Dielectric.....	42	Fibre, Guya.....	34
Cement Felting, Asbesto-Sponge.....	30	Fibre, Hard.....	39
Cement, H. O. Pipe Joint.....	31	Fibroid Asbestos Paper Tape.....	41
Cements, High Temperature.....	29	Filling, Conduit.....	35
Cement, Magnesia.....	31	Filler, Asphalt.....	74
Cement, No. 400.....	31	Filtering Films, Asbestos.....	14
Cement, Rubber Non-Inflammable, Narco.....	19	Fireproof Gloves.....	13
Cement, Spark Plug.....	42	Fireproof Cold Water Paint.....	56
Cement, Sheep's Wool.....	31	Fireproof Rope.....	17
Cement, Vulcanized, Narco.....	20	Firebrick Coating, Brickline.....	29
Cementless Patches, Narco.....	19	Fireproof Paper, Indent.....	26
Ceillinite.....	25	Fire Extinguisher, J-M.....	20
Ceiling Diffusers for Church Lighting, Frink.....	52	Fire Extinguisher, Success Chemical.....	44
Cloth, Asbestos.....	12	Fire Engine, Success Chemical.....	44
Clothing, Asbestos.....	12	Fire Extinguisher, Manville Dry Powder.....	44
Clock, Automobile.....	17	Fixtures, Lighting.....	54
Cord and Twine, Asbestos.....	12	Flat Iron Holder, Asbestos.....	49
Corrugated Roofing, Asbestos.....	22	Flat Iron Rest, Asbestos.....	50
Coating, Regal Roof.....	23	Flexible Metallic Combination Air-Brake Hose.....	47
Cork Sheets, Pure.....	34	Flexible Metallic Combination Locomotive Tank Hose.....	47
Cork Sheets, Impregnated.....	34	Flexible Metallic Combination Car-Heating Hose.....	47
Cork Floor Tile, Pure.....	45	Flexible Metallic Combination Boiler Washout Hose.....	47
Cork, Granulated.....	34	Flooring, Mastic.....	45
Conduit, Sectional Underground.....	35	Floor Tile, Pure Cork.....	45
Conduit, Filling.....	35	Floor Preservative, Cement.....	74
Conduit, Fibre.....	40	Frink Reflectors for Case Lighting.....	52
Compounds, Splicing.....	40	Frink Reflectors for Art Gallery Lighting.....	52
Compound, F. Y. Insulation.....	42	Frink and J-M Linolite Bank Lighting.....	52
Cover, Asbestos Table.....	49	Frink Ceiling Diffusers for Church Lighting.....	52
Cover, Keystone Range Boiler.....	50	Frink Reflectors and Fixtures for Hospital Lighting.....	52
Cold Water Paint, Fireproof.....	56	Frink Reflectors for Memorial Windows and Glass Ceilings.....	53
Coating, Boiler Front.....	55	Frink and J-M Linolite Restaurant Lighting.....	53
Coating, Regal Roof.....	56	Frink and J-M Linolite Store Lighting.....	53
Coating, Liquid Waterproofing.....	73	Frink and J-M Linolite Store Window and Showcase Lighting.....	53
Concrete Floor Preservative.....	74	Frink and J-M Linolite Theatre Lighting.....	53
Concrete Primer.....	73	Frink and J-M Linolite Illumination for Armories, Billiard Parlors, Bowling Alleys, Gymnasiums, and Squash Courts.....	53
Cut-Out, Muffler.....	18	Frink Carriage Call.....	54
Cut Filler, Narco Tire.....	19	Frink Portable Lamp Guard.....	54
Cut Stone Backing.....	73	Frink Polaralite Sign.....	54
D			
Deadening Felt, Wool.....	26	Frostproof Pipe Covering.....	60
Diaphragm Covers, Asbestos.....	13	Fuses, Noark Auto.....	18
Dielectric Cement.....	42	Fuses, Noark, Enclosed.....	37
Dry Batteries.....	18	Fuse Boxes, Noark.....	37
Duplex Hydraulic R. & P. Packing.....	65	Furnace Cement, Asbestos.....	30
E			
Ebony Asbestos Wood.....	40	Furnace Cement, Arido Dry.....	30
Eighty-Five Per Cent. Magnesia Pipe Covering.....	58	G	
Eighty-Five Per Cent. Magnesia Sheets and Blocks.....	62	Gaskets, Kearsarge Manhole and Handhole Boiler Plate..	67
Electric Vibrator Horn.....	16	Gasketing, Kearsarge Tubular.....	67
Electrobestos.....	39	Giant Strain Insulator.....	38
Electrotherm.....	42-50	Glassworkers' Materials, Asbestos.....	14
Engine, Success Chemical Fire.....	44	Glue, Fireproof.....	13
Eureka Pipe Covering.....	59	Granulated Cork.....	34
Enclosed Fuses, Noark.....	37	Guya Fibre.....	38

MATERIAL	H	PAGE
Hair Insulator, Keystone.....		24
Hair Felt, Asbestos.....		58
Hair Felt, Standard.....		25-34
Hard Fibre.....		39
H. O. Pipe Joint Cement.....		31
High Temperature Cements.....		29
Holder, Asbestos Flat Iron.....		49
Horn, Long.....		16
Horn, Electric Vibrator.....		16
Hose, Flexible Metallic Combination Air-Brake.....		47
Hose, Flexible Metallic Combination Locomotive Tank.....		47
Hose, Flexible Metallic Combination Car-Heating.....		47
Hose, Locomotive Squirt.....		47
Hose, Flexible Metallic Combination Boiler Washout.....		47
Hose, Jomanco.....		46
Hose, Kearsarge.....		46
Hospital Lighting, Frink Reflectors and Fixtures for.....		52
Hub Odometer.....		16

I

Illumination for Armories, Billiard Parlors, Bowling Alleys, Gymnasiums and Squash Courts.....		53
Impregnated Cork Sheets.....		34
Insulating and Roofing Felts.....		24
Insulator, Keystone Hair.....		24
Insulation, Salamander.....		24
Insulation, Vitrebestos Ceiling.....		63
Insulation, Vulcabeston.....		39
Insulation, Moulded Mica.....		39
Insulation, Feed Wire.....		38
Insulation, Niagrite Fireproof Cable.....		41
Insulation, Compound "F. Y.".....		42
Insulator, Giant Strain.....		38
Incandescent Lamp.....		54
Indent Fireproof Paper.....		26
Iron Preservative.....		56

J

Jacket, Standard Asbestos Weatherproof.....		61
Jacket, Asbestos Acid-Proof.....		61
Jacket Lacing.....		61
Jomanco Hose.....		46
Jomanco Tape.....		40

K

Kearsarge Manhole and Handhole Gaskets.....		67
Kearsarge Tubular Gasketing.....		67
Kearsarge Packing.....		65
Kearsarge Throttle Valve Packing.....		66
Kearsarge Hose.....		46
Keystone Hair Insulator.....		24
Keystone Range Boiler Cover.....		50
Keystone Plumbing Pipe Covering.....		60

L

Lacing Jacket.....		61
Lamps, Incandescent.....		54
Lamp Guard, Frink Portable.....		54
Laundry Felt.....		55
Laundry Blanket, Asbestos.....		55
Lamp Thread, Asbestos, Incandescent.....		14
Lead Joint Runner, Asbestos.....		12
Leak-No Metallic Compound.....		32
Lens (Non-Blinding).....		17
Lighting, Frink Reflectors and Fixtures for Hospital.....		52
Lighting, Frink Reflectors for Art Gallery.....		52
Lighting, Frink and J-M Linolite Bank.....		52
Lighting, Frink Ceiling Diffusers for Church.....		52
Lighting, Frink and J-M Linolite Restaurant.....		53
Lighting, Frink and J-M Linolite for Store and Show Window Cases.....		53

MATERIAL	PAGE
Lighting, Frink and J-M Linolite Theatre.....	53
Lighting, Frink and J-M Linolite Store.....	53
Lighting, Frink Reflectors for Case.....	52
Lighting Fixtures.....	54
Linolite Lamp.....	52
Lining, Brake, Non-Burn.....	17
Lining, Brake, for Ford Cars.....	18
Lining, Sea Grass.....	24
Locomotive Squirt Hose.....	47
Listing, Asbestos.....	41
Long Horn.....	16
Liquid Waterproofing Coating.....	78

M

Machine, Spraying.....	56
Manville Dry Powder Fire Extinguisher.....	44
Magnesia Cement.....	31
Manufacturers' Packing.....	68
Manhole and Handhole Gaskets, Kearsarge.....	67
Mats, Asbestos Table.....	49
Mats, Asbestos Stove.....	49
Mastic Flooring.....	45
Metallic Compound, Leak-No.....	32
Metallic Sand Spout, Flexible.....	38
Memorial Windows and Glass Ceilings, Frink Reflectors for.....	53
Mineral Rubber.....	74
Mine Supplies and Overhead Trolley Line Materials.....	38
Mineral Wool.....	34
Millboard, Asbestos Sheet.....	26
"Moulded Mica" Weatherproof Sockets.....	38
Moulded Mica Insulation.....	39
Moulded Asbestos Pipe Covering.....	59
Moulded Asbestos Sheets and Blocks.....	63
Mogul Coil Packing.....	65
Moving Picture Machine Booths, Asbestos.....	71
Motor Cement, Asbestos.....	20
Muffler Cut-Out.....	18

N

Niagrite Fireproof Cable Insulation.....	41
"Noark" Enclosed Fuses.....	37
"Noark" Fuse Boxes.....	37
"Noark" Service Boxes.....	37
"Noark" Subway Boxes.....	37
"Noark" Primary Fuse Boxes.....	37
"Noark" Universal System.....	37
Non-Blinding Lens.....	17
Non-Inflammable Rubber Cement, Narco.....	19
Nycinsul.....	25

O

Odometer, Hub.....	16
Outfits, Narco Vulcanizing.....	19
Overhead Trolley Line Materials.....	38
Mine Supplies.....	38

P

Packing, Duplex Hydraulic.....	65
Packing, Kearsarge.....	65
Packing, Kearsarge Throttle Valve.....	66
Packing, Mogul Coil.....	65
Packing, Manufacturers'.....	68
Packing, Perманite.....	67
Packing, Sheet.....	67
Packing, Regonnet Reverse Gear Piston.....	66
Packing, Universal Ammonia.....	65
Packing, Universal Steam Hammer.....	65
Packing, Universal Piston.....	66
Packing, Vulcabeston Mallet Quality.....	66
Paint, Fireproof Cold Water.....	56
Parian Ware.....	54
Paper, Weatherite Building.....	25

Generated at University of Michigan on 2023-02-01 07:27 GMT / https://hdl.handle.net/2027/uiug.30112069211958
Public Domain, Google-digitized / http://www.hathitrust.org/access_use#pd-google

MATERIAL	PAGE
Paper, Red Rosin-Sized	25
Paper, Asbestos	25
Paper, Indent Fireproof	26
Paper, Asbestocel Corrugated Fireproof	60
Patches, Cementless, Narco	19
Permanite Packing	67
Permanent Moving Picture Machine Booths, Asbestos Wood	71
Phoenix Asbestos Stove Lining	30
Plaster, Asbestos Wall	27
Plastic Stove Lining, Asbestos	30
Pipe Covering, Asbestos Fire Felt	58
Pipe Covering, Asbestos Sponge Felted	58
Pipe Covering, Asbestocel	59
Pipe Covering, Air-Cell	59
Pipe Covering, Anti-Sweat	60
Pipe Covering Accessories	62
Pipe Covering, Brine and Ammonia	61
Pipe Covering, Eureka	59
Pipe Covering, Eighty-Five Per Cent. Magnesia	58
Pipe Covering, Frostproof	60
Pipe Covering, Keystone Plumbing	60
Pipe Covering Flanges, Removable	61
Pipe Covering, Moulded Asbestos	59
Pipe Covering, Safety Blow-Off	58
Pipe Covering, Vitribestos	58
Pipe Covering, Wool Felt	59
Pipe Covering, Wool Cell	59
Pipe Covering, Zero	61
Piston Packing, Universal	66
Plug Spark, Sootproof	18
Polaralite Sign, Frink	54
Polisher, Asbestos Stove	50
Portable Moving Picture Machine Booth, Asbestos Wood	71
Primary Fuse Boxes, "Noark"	37
Preservative Iron	56
Preservative Stack	56
Primer, Concrete	73
Pump Tire	17
Pump Valves, Vulcabeston	68
Pump Valves, Rubber	68
Pure Cork Sheets	34
Pure Cork Floor Tile	45

R

Rail Bonds	38
Range Boiler Cover, Keystone	50
Regal Roofing	22
Regal Anti-Leak Stick	23
Regal Sheathing	24
Regal Roof Coating	56
Repair Outfit, Tire Ford, Narco	19
Repair Stacks, Narco	20
Refrigerating Machine, Audiffren-Singrun	35
Reflectors for Case Lighting, Frink	52
Reflectors for Memorial Windows and Glass Ceilings, Frink	53
Retort Cement, Asbestos	29
Rest, Asbestos Flat Iron	50
Restaurant Lighting, Frink and J-M Linolite	53
Regounet Reverse Gear Piston Packing	66
Removable Pipe Covering Flanges	61
Rings, Sea	65
Rope, Fireproof	14
Roofing, Asbestos Ready	22
Roofing, Asbestos Built-Up	22
Roofing, Asbestos Corrugated	22
Roof Putty, Elastic	23
Roofing Brushes	23
Roofing and Insulating Felts	24
Roll Board and Felt, Asbestos	25
Rosin-Sized Paper, Red	25
Rubber Reviver and Refinisher, Narco	19
Rubber Cement, Non-Inflammable, Narco	19
Rubber Tape, Alpha	40
Rubber Pump Valves	68
Rubber, Mineral	74

MATERIAL	PAGE
Sand Spout, Metallic	38
Salamander Insulation	24
Safety Blow-Off Pipe Covering	58
Sea Rings	65
Sea Grass Lining	24
Sectional Underground Conduit	35
Seigelite Packing	67
Semi-Portable Moving Picture Machine Booths, Asbestos Wood	71
Service, Acoustical	10
Service Boxes, "Noark"	37
Sewing Twine, Asbestos	12
Sheets, Asbestos Baking	49
Sheet Packings	67
Sheets, Asbestos Fire Felt	62
Sheathing, Regal	24
Sheep's Wool Cement	31
Sheets, Asbestos Sponge Felted	62
Sheets and Blocks, Eighty-Five Per Cent. Magnesia	62
Sheets, Vitribestos	62
Sheets and Blocks, Asbestocel	62
Sheets and Blocks, Air Cell	63
Sheets and Blocks, Moulded Asbestos	63
Slack Adjuster	13
Slaters' Felt, Asbestos	24
Sign, Frink Polaralite	54
Sill Covering, Asbestos	13
Shingles, Asbestos Transite	22
Shingles, Asphalt	23
Shock Absorber, Automobile	17
Smoke Jacks, Asbestos Wood	27
Soldering Blocks, Asbestos	14
Sockets, "Moulded Mica," Weatherproof	38
Splicing Compounds	40
Spark Plug Cement	42
Spark Plug, Sootproof	18
Spraying Machine	56
Speedometers	16
Stack Lining, Vitribestos	63
Starch Boards and Sorting Tables, Transite Asbestos Wood	55
Stock Preservative	56
Steam Hammer Packing, Universal	65
Stove Mats, Asbestos	49
Stove Polisher, Asbestos	50
Stove Lining, Phoenix Asbestos	30
Stove Lining, Plastic Asbestos	30
Store Window Lighting and Show Case, Frink and J-M Linolite	53
Store Lighting, Frink and J-M Linolite	53
Stocks, Repair, Narco	20
Steam Insulation, Giant	38
Standard Hair Felt	25-34
Stucco, Asbestos	27
Subway Boxes, "Noark"	37
Success Chemical Fire Extinguisher	44
Success Chemical Fire Engine	44

T

Table Cover, Asbestos	49
Table Mats, Asbestos	49
Tachometer	16
Tape, Auto	18
Tape, Jomanco	40
Tape, Alpha Rubber	40
Tape, Asphalt Cable	41
Tape, Fibroid Asbestos Paper	41
Tank, Carter Gravity	16
Telephone Blanket, Asbestos	12
Tent Shields, Asbestos	14
Theatre Lighting, Frink and J-M Linolite	53
Theatre Curtains, Asbestos	71
Theatre Curtains, Vitrebestos	71
Thread, Asbestos Incandescent Lamp	14
Throttle Valve Packing, Kearsarge	66
Tire Pump	17
Tirenew	19

MATERIAL	PAGE
Tire Cut Filler, Narco.....	19
Tire Repair Outfit, Ford, Narco.....	19
Tile, Pure Cork Floor.....	45
Toaster, Asbestos.....	49
Torch, Asbestos.....	14
Transite Asbestos Wood.....	40
Trolley Line Materials and Mine Supplies, Overhead.....	38
Tubing, Asbestos Braided and Woven.....	41
Twine and Cord, Asbestos.....	12
Twine, Sewing, Asbestos.....	12
201 Stock, J-P.....	39

U

Universal Ammonia Packing.....	65
Universal Steam Hammer Packing.....	65
Universal System, "Noark".....	37

V

V-Rib Lath and Boiler-Covering Accessories.....	63
Ventilators, Asbestos Wood.....	27
Vitribestos Ceiling Insulation.....	63
Vitribestos for Ducts and Flues.....	63
Vitribestos Pipe Covering.....	58
Vitribestos Sheets.....	62
Vitribestos Stack Lining.....	63
Vitribestos Theatre Curtains.....	71

MATERIAL	PAGE
Vulcanizing Outfits, Narco.....	19
Vulcanizing Cements, Narco.....	20
Vulcabeston Insulation.....	39
Vulcabeston Mallet Quality Packing.....	66
Vulcabeston Pump Valves.....	68

W

Wall Plaster, Asbestos.....	27
Ware, Parian.....	54
Waterproofing Asbestos Felt.....	73
Weathertite Building Paper.....	25
Windshield Attachment for Ford Cars.....	18
Wire Insulator, Feed.....	38
Wood, Asbestos, Transite.....	27
Wood, Ebony, Asbestos.....	40
Wood, Transite, Asbestos.....	40
Wool Cell Pipe Covering.....	59
Wool Deadening Felt.....	27
Wool Felt Pipe Covering.....	59
Wool, Mineral.....	34

Y

Yarn, Asbestos.....	14
---------------------	----

Z

Zero Pipe Covering.....	61
-------------------------	----

OAK ST HDSE



Generated at University of Michigan on 2023-02-01 07:27 GMT / <https://hdl.handle.net/2027/uiug.30112069211958>
Public Domain, Google-digitized / http://www.hathitrust.org/access_use#pd-google